

# About the Agency

The Independent Environmental Monitoring Agency was formed in 1997 to act as a public watchdog for the Ekati Diamond Mine™.

We are governed by a Board of Directors, appointed by:

- Akaitcho Territory Government (represented by Lutsel K'e and Yellowknives Dene First Nations)
- Tłı̨chǫ Government
- North Slave Métis Alliance
- Kitikmeot Inuit Association
- Federal Government
- Government of the Northwest Territories
- BHP Billiton Diamonds Inc.

## Agency Mandate

- Review, report and make recommendations on BHPB and government reports and plans
- Make recommendations on the addition of traditional knowledge and experience of Aboriginal Peoples into environmental plans and programs
- Participate as an intervenor in regulatory processes
- Provide an accessible public library of all environmental information relevant to the project
- Provide ways of distributing information to Aboriginal Peoples and the public
- Provide an effective means to bring to BHPB and governments the concerns of Aboriginal Peoples and the general public



Agency directors visit to the Kaw Tay Whee School, Dettah

## 2005 -2006 ANNUAL REPORT SUMMARY

# Independent Environmental Monitoring Agency



Agency Board of Directors and Staff

*Top l to r: Sean Kollee, Environmental Analyst; Tim Byers, Vice-Chairperson; Bill Ross, Chairperson; Kevin O'Reilly, Manager; bottom row l to r: Sheryl Grieve, Director; Tony Pearse, Director; Jaida Ohokannoak, Secretary-Treasurer.*

## How to Reach Us

### In Person

Suite 203  
5006 Franklin Avenue  
Yellowknife NT

### By Mail

P.O. Box 1192  
Yellowknife NT  
X1A 2N8

### By Telephone

(867) 669-9141

### By Fax

(867) 669-9145

### By E-mail

monitor1@yk.com

Web site: [www.monitoringagency.net](http://www.monitoringagency.net)

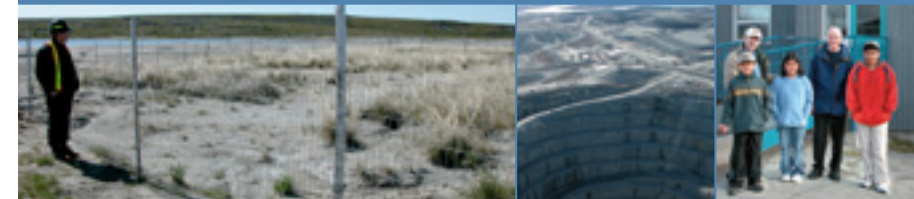
For further information on the recommendations please refer to the Technical or Plain Language Annual Report available through our office or web site.

A PUBLIC WATCHDOG FOR ENVIRONMENTAL MANAGEMENT  
AT EKATI DIAMOND MINE™



A PUBLIC WATCHDOG FOR ENVIRONMENTAL MANAGEMENT  
AT EKATI DIAMOND MINE™

# Independent Environmental Monitoring Agency



• ANNUAL REPORT SUMMARY •

# 2005-2006

## Message From the Chairperson

I am pleased to present to you a summary of the 2005-2006 Annual Report of the Independent Environmental Monitoring Agency (the Agency). This brochure covers what happened at the Ekati Mine in terms of how BHP Billiton (BHPB) and governments have performed with regard to protecting the environment.

In this brochure you will find recommendations that we have made to BHPB on how to continue to protect the land, water and wildlife. Over the last year we have been busy resolving a disagreement between ourselves and BHPB over our work plan

activities and budget and looking into BHPB's plan to reclaim the mine after it is closed. While BHPB is not planning on shutting down the mine anytime soon, it must begin to develop the details of what the rock piles, pits, tailings area and roads will look like when the mining is finished. The company must also take the time to consider what the Aboriginal Peoples have to say about mine closure and reclamation.

Monitoring the water and wildlife reports prepared by BHPB remains an important part of the work we do. These reports continue to be delivered late by the company. While the company does a good job, we are increasingly concerned that BHPB does not appear to devote the necessary time and resources to protecting the environment.

Please feel free to pass on your comments to us about protecting the environment at Ekati or about the job we are doing to keep our Aboriginal Society Members up to date with activities at the mine. For a copy our full Annual Report for

2005-2006, please visit our website or ask our office for a copy.



Sincerely,  
William A. Ross  
Chair, November 30, 2006

## Key Recommendations from our 2005-2006 Annual Report

This is a summary of the recommendations made in our 2005-2006 Annual Report:

- BHPB should start filling the top end of the tailings area as quickly as possible to allow for large scale reclamation by 2009.
- BHPB should not deposit tailings into the lower parts of the tailings facility to provide extra protection for downstream water quality.
- BHPB needs to work cooperatively with all interested parties in developing a detailed closure and reclamation plan.
- BHPB should find out why there have been changes in downstream zooplankton (very small water creatures that live in the water) by reviewing data that has already been collected and starting new research if necessary.
- BHPB needs to improve its consultation with communities.
- BHPB should make sure it has enough staff and resources to meet its environmental commitments.

## Ekati Diamond Mine



### BHP Billiton and government regulators environmental performance scorecard

Environmental Indicator	Agency Rating	Comments
Water and Down-stream Aquatic Life	☹ Water and Fish	- stronger protection requirements are found in the new Ekati water licence - BHPB late again in delivering reports and plans
Wildlife	<ul style="list-style-type: none"> <li>☹ Caribou</li> <li>☹ Wolves</li> <li>☹ Grizzly Bears</li> <li>☹ Wolverine</li> </ul>	- growing concern with decline in Bathurst caribou herd - improved caribou monitoring but more regional work is needed - company has improved garbage handling and skirting around buildings
Land	<ul style="list-style-type: none"> <li>☹ Management of mine facilities</li> <li>☹ Reclamation Planning</li> </ul>	- a new plan for tailings management was submitted but it remains too vague and more research on reclamation is needed - work started on a new closure plan but better consultation is required. We provided advice on this to BHPB.

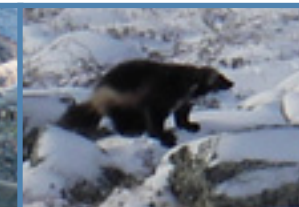
● much improved from last year   ● satisfactory, generally okay but may still require some improvements   ● unsatisfactory, requires improvement



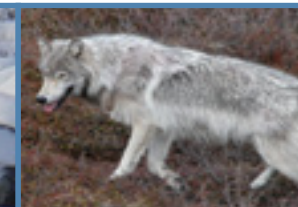
MAP: BHP BILLITON DIAMONDS INC.



Caribou from Bathurst Herd  
PHOTO: PAGE BURTT



Wolverine



Wolf