



**Dominion
Diamond Mines**

2017 IEMA AGM

Dominion Update Presentation

January 17, 2018



Agenda

- **General Update**
 - Corporate changes
- **Project Updates**
 - Jay, Sable, Misery Underground, Fox Deep
- **Program Updates**
 - Fish and Aquatics
 - Wildlife
 - Air and Land
 - Closure and Reclamations
 - Traditional Knowledge



General Update

- **Corporate Head Office Relocation**

- Move to Calgary is complete
- Environment Department staff are mostly in Calgary
- Permitting Team Members in Yellowknife - Lynn Boettger and Dustin Chaffee
- No change at Ekati mine site operations for Environment Department

- **Washington Companies Acquisition**

- Effective November 1, 2017
- Name change due to registration in different jurisdiction

Old Legal Name	New Legal Name
Dominion Diamond Corporation	Dominion Diamond Mines ULC
Dominion Diamond Ekati Corporation	Dominion Diamond Ekati ULC

- Privately held company
- Eight businesses in mining, shipping and rail transportation, heavy machinery, ship building, aviation and environmental remediation

Jay Project

Water Licence

- Issued July 6, 2017 and since then various submissions to the WLWB including Engagement Plan, Jay WRSA Co-Placement Design Study, Site Wide WPKMP
- Next is submission of Jay AEMP and ARF – extension granted until March 9, 2018

TKEG

- Last meeting in Yellowknife December 5 & 6 2017
- Next meeting will happen in the Spring

Land Use Permit - Culture Camp (Measure 7-2)

- Issued an LUP but amendment application recently submitted as site chosen was not viable for the type of camp set up required

AEMP Baseline Data Collection

- Winter and summer sampling; LdS, LdG, Thonokied and Afridi lakes

Jay Project

EA Reporting

- Submitted Annual Report as per Jay Report of Environmental Assessment June 30, 2017 (MVEIRB)

Fisheries Authorization

- Ongoing work with DFO
- Submission of Offsetting Plan in first quarter of 2018

Caribou and Roads

- CRMP implemented mid-2016
- 50 collars purchased; ZOI funding soon to be in place
- CMP workshops held December 2017
 - Bathurst range research
 - TK-based ZOI monitoring program
- Draft tender for research program to be issued by end of January 2018



Jay Project

Update

- Construction complete for 2017:
 - Main access road to South dike abutment
 - Spur road to North dike abutment
 - Pipeline road around King Pond

Next Steps

- Construction program for 2018:
 - Crushing for road and dike construction
 - Laydown construction at project site
 - Final access road capping with fine crush



Sable Project

- Filter dike completed
- Site infrastructure constructed
 - Generators
 - Fuel farm
 - Maintenance shelter
- Pre-stripping has started and is ongoing
- Submission of additional information to the WLWB re WRSA Design/Setback distances as per August 16, 2017 decision
- Two Rock Outflow Design Report – Reviewer comments due January 17, 2018



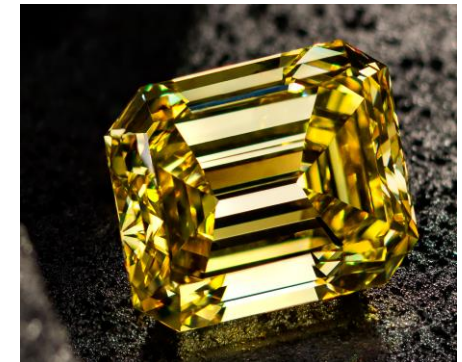
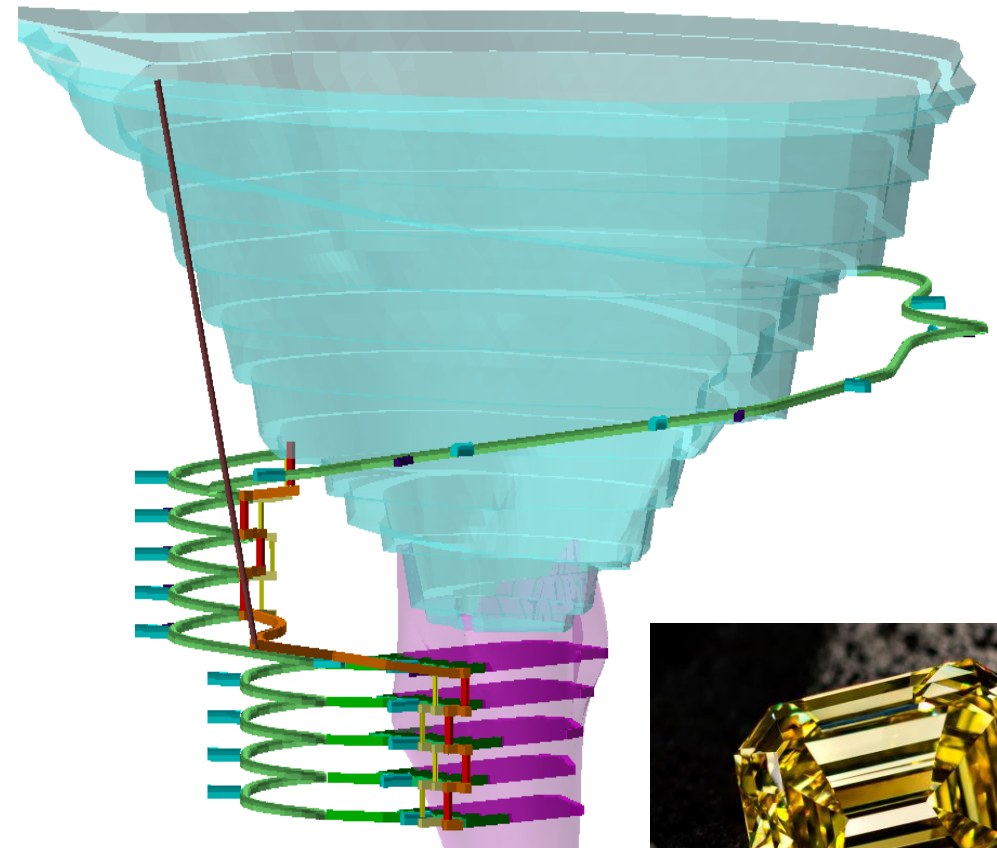
Misery Underground & Fox Deep Projects

Misery Underground

- Submitted application to WLWB in August 2017
- Public Hearing February 7, 2018
- Water Licence anticipated from Minister in August/September 2018

Fox Underground (Fox Deep)

- Completing Preliminary Economic Assessment
- Pre-Feasibility Study next year
- Some investigative drilling early next year to inform the Pre-Feasibility Study



Fish and Aquatics

AEMP

- Sediment year - issues with core sampler

Pigeon Stream Diversion Monitoring

- Year 4 of 10 year monitoring program: physical (flow temperature, habitat structure, WQ, SQ, etc.), biological (e.g., CPOM, FPOM, primary and secondary producers), and fish (e.g., community composition, migration, spawning and fry surveys) characteristics.

Sable/Jay Baseline Data Collection

- Physical, chemical, and biological variables from LdS, LdG, Afridi and Thonokeid lakes, and a subset of lakes in Sable area
- Large-bodied fish (Sable)



Wildlife

Caribou and Roads

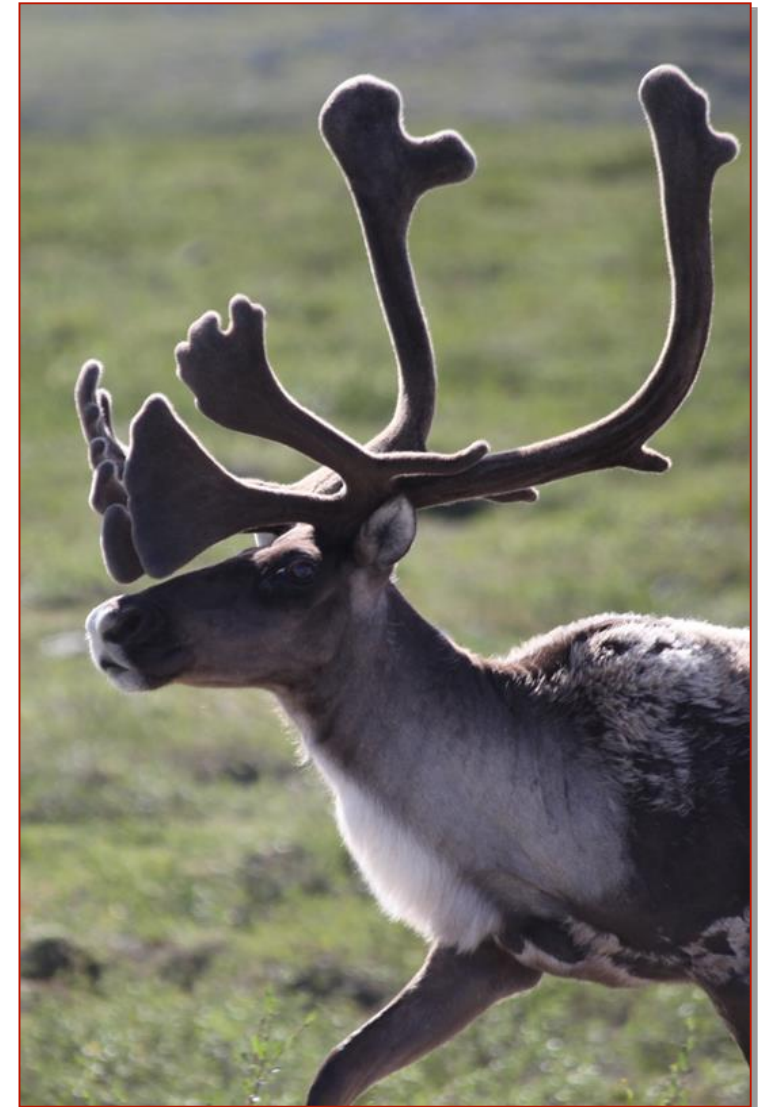
- Continued work with Natural Resources Canada on drivers of Zone of Influence
- Hosted GNWT and Community Members conducting behavioural monitoring around the mine (October)

Grizzly Bear DNA Program

- Successfully completed DNA program
- Laboratory expects results to be ready in early February 2018 followed by the Report in Summer 2018

Wolverine DNA Program

- GNWT re-assessing program



Air and Land

AQEMMP

- Lichen sampling conducted in July/August
- Three year report will be released March 31st

Envirokleen

- Expanded application zone to include entire Misery Rd. with 15m buffers near waterbodies
- Summary report available in spring 2018

WRSA Seepage Monitoring

- Three year report released in 2017
- Data summary will be release March 31st



Traditional Knowledge

- TKEG meetings
 - Four meetings: Two at site; two in Yellowknife
 - AEMP, Jay AEMP Reference Lake, Closure and Reclamation, Wildlife Programs, Culture Camp location
- Elders tour of Jay Crusher
- Community Tours
- Sable Baseline large bodied fish program
- Caribou Mitigation Plan
- Student Tour and Seed Collection Project
- Culture Camp
 - permitting in progress; build and use in 2018
- Engagement Plan
- TK Framework
- TK Community Based Projects
 - LKDFN – Moccasins on the Ground
 - Tilicho – Boots on the Ground Caribou Monitoring



Thank You
Questions?