



**Dominion
Diamond Mines**

2018 IEMA AGM

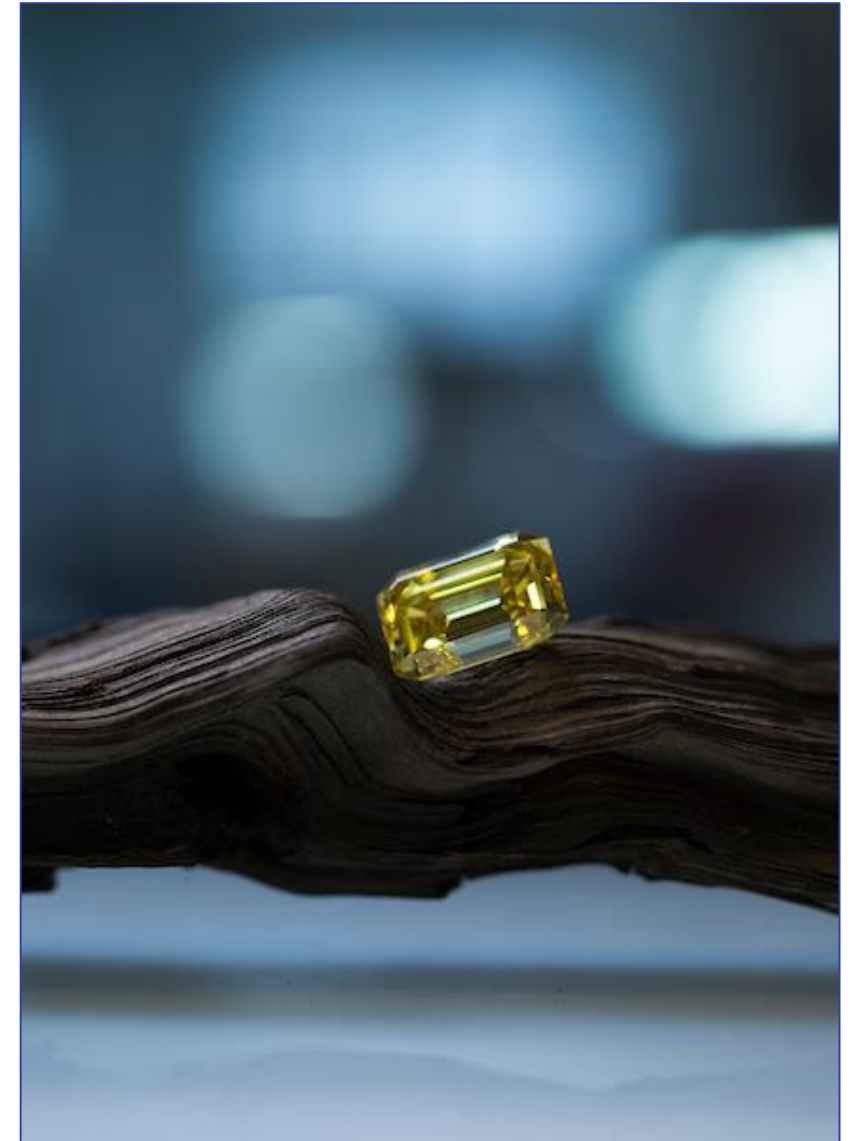
Ekati Diamond Mine Update

December 5, 2018



Agenda

- **General Update**
- **Project Related Updates and a Look Ahead**
 - Jay, Misery Underground, Fox Deep, Sable
- **Programs**
 - Fish and Aquatics
 - Wildlife
 - Air and Land
 - Closure and Reclamation
 - Traditional Knowledge
 - Exploration



General Update

- Company wide business review in this last year since Washington acquisition has seen a reduction in the workforce and other cost efficiencies.
- Permitting Team members are now all in Yellowknife Lynn Boettger (Superintendent, Permitting) and Dustin Chaffee (Permitting Advisor).
- New VP of Exploration - Rory Moore. New COO – Shane Durgin.
- 2019 will be a challenging year for Ekati as there will be a focus on development (e.g. Misery Underground), closure of the underground (Koala), a different type of feed to the process plant and lower than anticipated diamond prices.



Jay Project - Past Year

- Initiation of an optimization study on the Jay Project in Spring of 2018. Dominion is doing the work required to keep the options open for the Project.

SUBMISSIONS

- Jay Project Co-Placement Study Design – October 2017
- Jay AEMP and ARF – March 2018
- Jay Road Construction Plan Version 2.0 – January 2018
- 2017 Jay Project EA Annual Report as per Measure 13-3 (MVIRB) – June 2018

TKEG

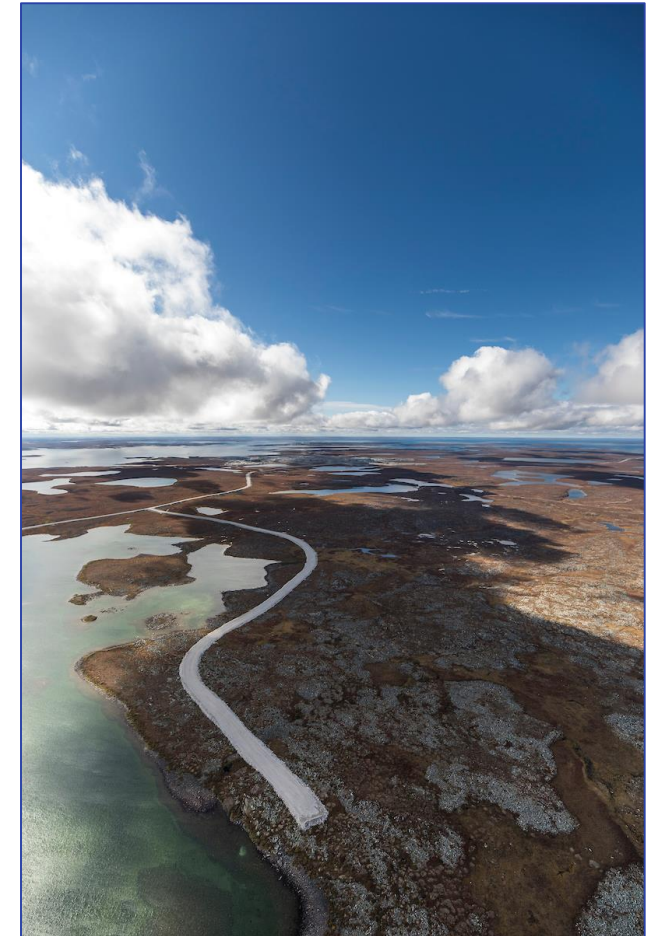
- Meeting in September 2018 at Ekati
- December 2018 meeting in Yellowknife postponed

Land Use Permit - Culture Camp (Measure 7-2)

- Amendment to permit received in March 2018

AEMP Baseline Data Collection

- Winter and summer sampling; LdS, LdG, Thonokied and Afridi lakes



Jay Project – Past Year

Caribou and Roads

- Continued discussions with IBA communities on developing a TK based research program for studying the drivers of the Zone of Influence (ZOI)
- Hosted community members and TKEG to view the Jay and Sable roads (September 2018)
- Focused effort on conducting more caribou behavioral surveys than past year and align data with Diavik

Looking Forward

- Optimization Study is ongoing. No decision as of yet from the Dominion Board as to when the Project will proceed.
- Dominion will continue to meet Water Licence, Land Use Permit, and EA Measures requirements so as to keep the option for Jay Project open when a decision is made.

Fisheries Authorization

- Ongoing work with DFO
- Submission of Fisheries Act Authorization application for the Jay Project expected in first quarter of 2019 (Jay Offsetting Plan)



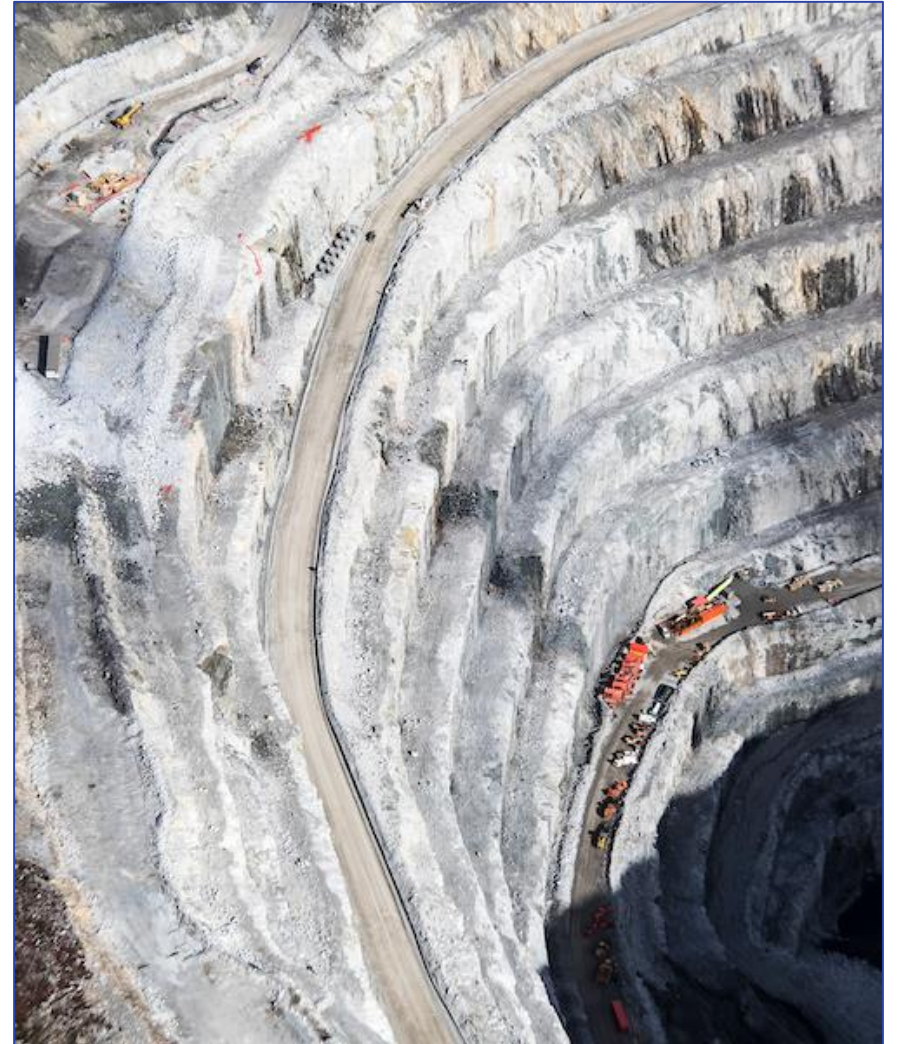
Misery Underground & Fox Deep Projects

Misery Underground

- Land Use Permit issued in July 2018
- Water Licence received in August 2018
- Ongoing development of the underground and related surface infrastructure
- Working through the challenges of security allocation and posting with GNWT and WLWB

Fox Underground (Fox Deep)

- Work will continue in terms of an optimization study on an underground project at Fox
- Data collection to inform this work



Sable Project



- Continued Development of the Sable Pit and associated infrastructure
- Sable AEMP Design Plan approved in April 2018
- Approval of WROMP Version 9 and Sable WRSA Design Report Version 2 in July 2018
- Sable diffuser construction delayed due to WLWB decision on Construction Plan late in summer season 2018

Fish and Aquatics



Photos courtesy of Laura Pacholski. Taken during Fish Tissue Program, Ekati Diamond Mine, NT (August 2018).

AEMP

- Sediment year - issues with core sampler

Pigeon Stream Diversion Monitoring

- Year 4 of 10 year monitoring program: physical (flow temperature, habitat structure, WQ, SQ, etc.), biological (e.g., CPOM, FPOM, primary and secondary producers), and fish (e.g., community composition, migration, spawning and fry surveys) characteristics.

Sable/Jay Baseline Data Collection

- Physical, chemical, and biological variables from LdS, LdG, Afridi and Thonokeid lakes, and a subset of lakes in Sable area
- Large-bodied fish (Sable)



Fish and Aquatics – Water Licence Submissions *

Sable Baseline Report

- Data compiled and analyzed. Report written and finalized.
- Submitted as an appendix to the 2018 AEMP Report (March 2019).

Sable Diffuser Plume Study Report

- Plume study to be completed following installation of diffuser in later summer 2019.
- Study report will be submitted late 2019.

Jay AEMP Design Plan and Response Framework (March 2018)

- Reviewer comments due by 31 January 2019.

Sediment Sampling Equipment Change Request (June 2018)

- Not approved (November 2018).
- Equipment for Jay AEMP to be decided as part of the Jay AEMP Design Plan review process.

Potassium Toxicity Study Design (October 2018)

- Submitted to the Board on 3 October 2018.
- Reviewer comments due by 7 December 2018.

Various Response Plans (throughout 2018)

Aquatic Response Framework

- Submitted to the Board June 2018.
- Approved by the Board November 2018.

Cujo Outflow Special Study Design (due January 2019)

AEMP Re-evaluation (due December 2019)

**Note: Not a complete list of submissions*

Wildlife

Caribou and Roads

- Caribou camera report is being deferred – Will be distributed in 2020
- Caribou detection during winter/low light conditions (Nov-Feb). IEMA requested that Dominion provide methodology for detecting caribou during periods of darkness. Continue to test the infrared camera in low light conditions in 2018.

Grizzly Bear DNA Program

- Received laboratory results in April 2018 and finalized the Report in late 2018
- Presented the program results at the Geosciences Forum in Yellowknife (November)
- Dominion will not be continuing the GB DNA program
- Dominion will continue to monitor presence of GB around site and infrastructure

Wolverine DNA Program

- Dominion has discontinued the wolverine DNA program
- Discussions with Diavik about their approach to monitoring and opportunities for collaboration.



Air and Land

Air Quality

- 2017 Air Quality Monitoring Program Report for Results of air quality around the Ekati Diamond Mine (2015 to 2017).
- AQEMMP – amalgamation in progress

Dust Suppression Study

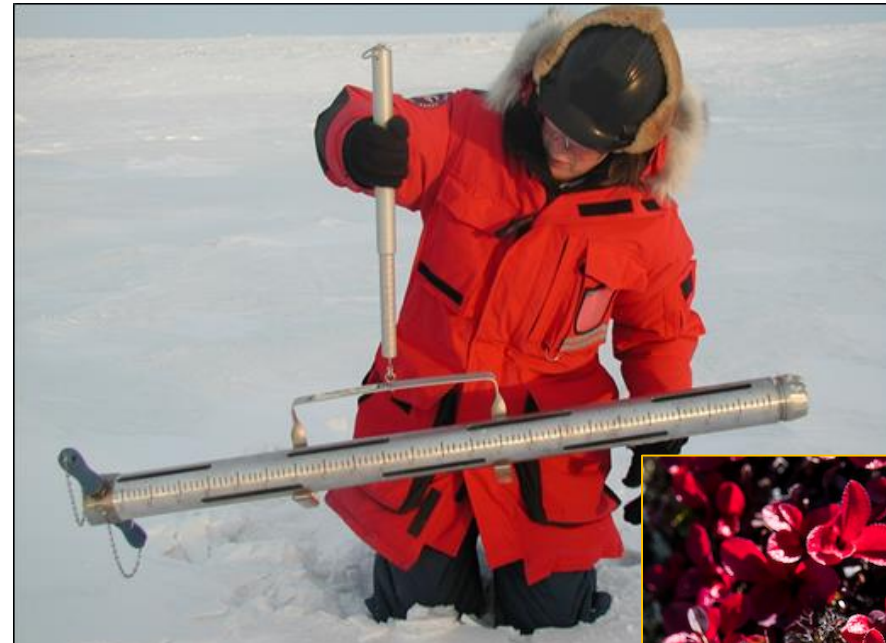
- Report distributed July 2018.
- Comments were received and responses provided.
- A Final Report will be circulated January 31, 2019. A best practices document is anticipated one month later.

WRSA Seepage Monitoring

- 2017 Waste Rock and Waste Rock Storage Area Seepage Survey Report released (April 2018)

MDMER

- Working with ECCC to implement these new regulations into the sampling regime.
- Working with GNWT to help create equivalency with the Waters Act.



Closure and Reclamation

LLCF Progressive Reclamation

- Continued to work on Cell B progressive reclamation
- Reclamation Research continued - Kugluktuk in late August of 2018 to collect salt tolerant plant materials from these environments to trial in the tailings at LLCF.

Old Camp Reclamation

- Completion of remedial excavations
- Confirmatory samples show no further work required at Old Camp

ICRP

- Submitted Version 3.0 August 2018
- Review ongoing
- Technical workshop January 22-23, 2019 in Yellowknife (this will be the only one)
- Review comments are due February 21, 2019

Panda/Koala Underground Closure

- Closure of underground workings is underway. Expect to be complete in March 2019.



Traditional Knowledge



- TKEG Meeting at Ekati (September 2018)
- Caribou and Roads Workshop (September 2018)
- Community Tours
 - Tlicho (May 2018)
 - Kugluktuk (October 2018)
- Sable Baseline Large Bodied Fish Program
- Kugluktuk Seed Collection Project (August 2018)
- TK Community Based Projects for 2019
 - Tilcho – Boots on the Ground Caribou Monitoring
 - YKDFN Caribou Monitoring



Exploration

- New Land Use Permit in Place for this work (W2018C0005) – includes provisions for an exploration camp and fuel storage.
- In 2018 carried out a winter program at Point Lake and summer program at various locations on the Ekati Claim Block.
- Focus on exploration in the upcoming year:
 - Re-evaluation of previously collected data.
 - Winter program planned at Point Lake (preparatory activities planned to start in January 2019).
 - Other activities will be determined as data and information collected during 2018 is further reviewed and analyzed.



Thank You



Questions?