



**Dominion
Diamond Mines**

2019 IEMA AGM

Ekati Diamond Mine Update

December 4, 2019



Agenda

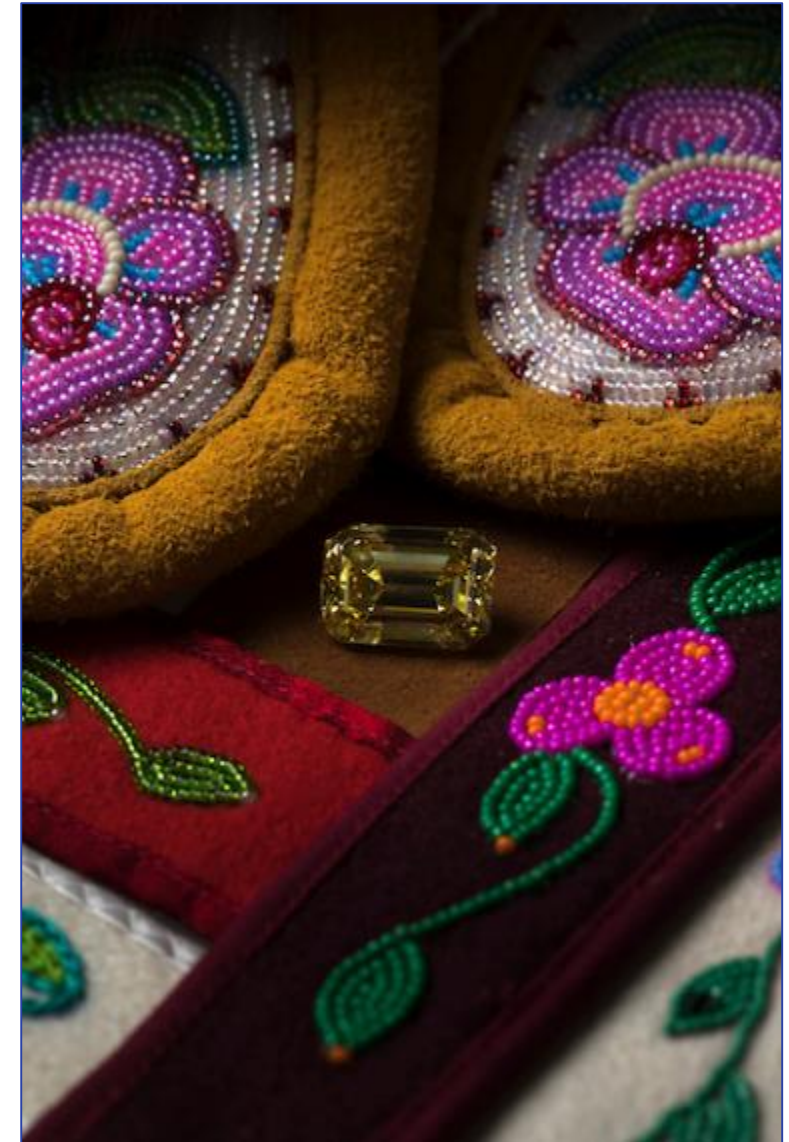
General Update

Project Related Updates

- Misery Underground, Fox Deep, Sable, Pigeon, and Lynx Updates, Jay Project, Future

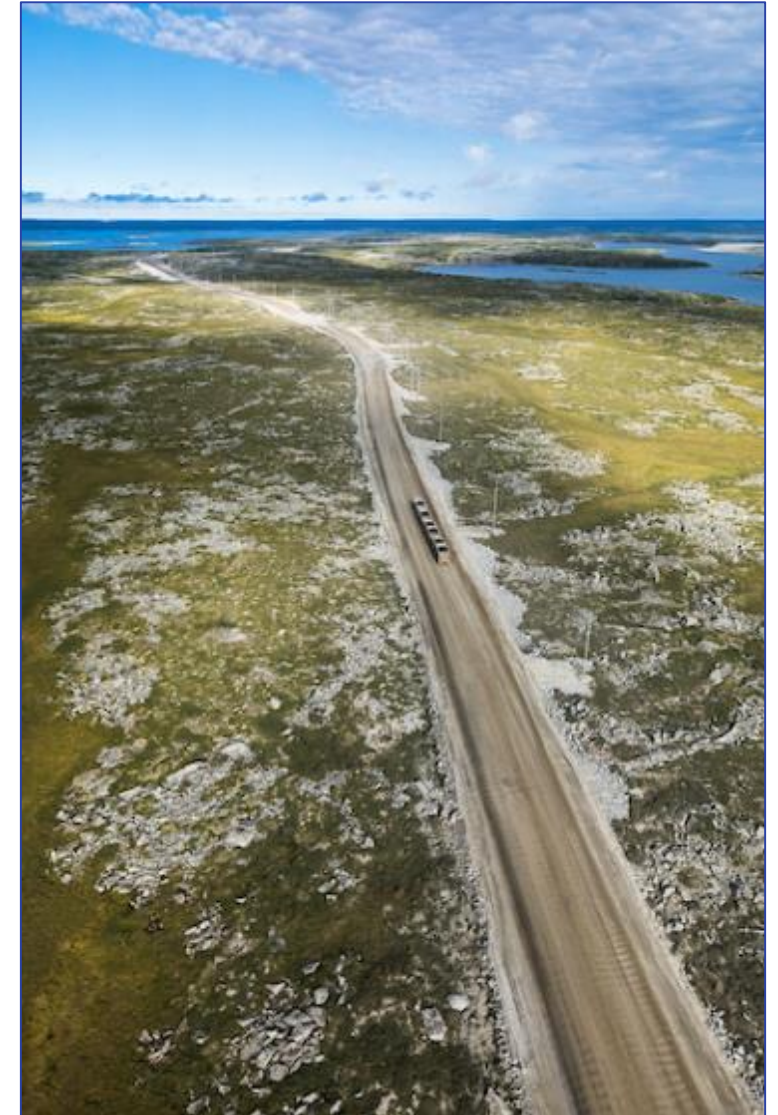
Programs

- Fish and Aquatics
- Wildlife
- Air and Land
- Closure and Reclamation
- Traditional Knowledge
- Exploration



General Update

- Early 2019 name change – now Dominion Diamond Mines ULC (DDM ULC)
- Company has continued the reduction in the workforce. Various other cost efficiencies have been implemented (e.g. flight schedule changes, Yellowknife office re-organization).
- Communities team (Nick Ballantyne and Rebecca Plotner) re-organized under Claudine Lee and are located in YK along with Permitting staff.
- Management:
 - CEO – Shane Durgin
 - CFO – Kristal Kaye
 - Head of Human Resources – Megan Bufton
 - Head of Supply Chain – Charlene Lees
 - General Mine Manager – John Paasche
 - VP of Exploration - Rory Moore
- 2020 will still be a challenging year for Ekati. Need to be cognizant of keeping operating costs low.



Misery Road – Road Train. Undated

Misery Underground & Fox Deep Projects

Misery Underground

- Ongoing development of the underground and surface infrastructure
- First ore out of MUG expected before end of 2019
- Working through the challenges of security allocation and posting with GNWT and WLWB
- Misery powerline permit extended for 2 years

Fox Underground (Fox Deep)

- Work on this project put on hold for the time being

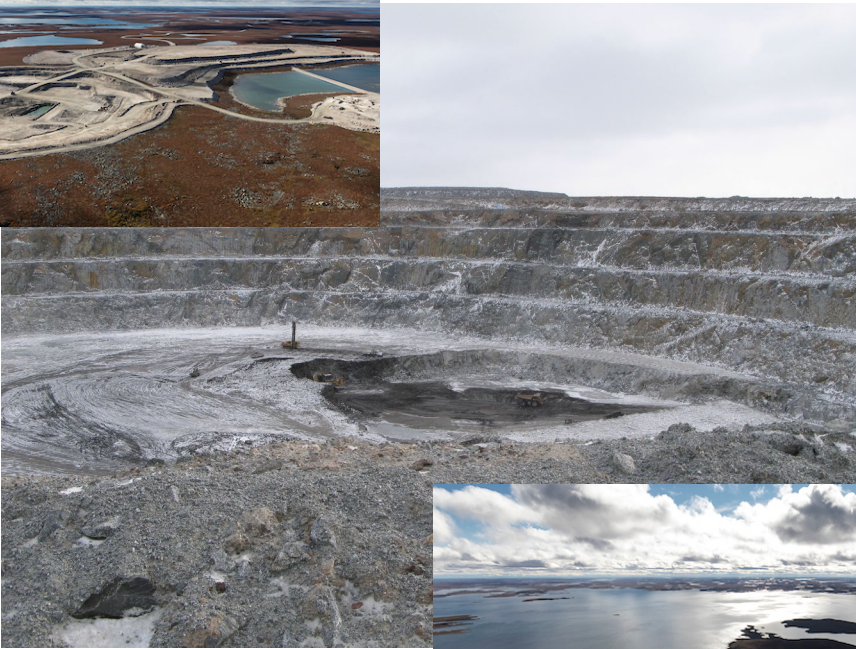


Misery Pit 2018

Sable, Pigeon and Lynx



Sable Pit - 2018



Pigeon Pit - 2018



Lynx Pit - 2018

SABLE

- Further development of the Sable Pit this year
- Sable Fuel Tank Farm Spill – As much clean up as possible has been completed before winter freeze-up. Daily monitoring. Retrieval of free standing hydrocarbons in spring.

PIGEON

- Ongoing ore processing

LYNX

- Completed June 2019
- Preparation for water management opportunities

Jay Project - Past Year



Jay Road – 2018.

- Optimization study on the Jay Project continued in 2019 but is now nearly complete.
- Dominion continued to meet Water Licence, Land Use Permit, and Environmental Assessment Measures requirements so as to keep the option for Jay Project to proceed available.

Fisheries Authorization

- Submission of Fisheries Act Authorization application (Jay Offsetting Plan)
- Rejection of Jay Project Offsetting Plan in April 2019
- Ongoing work with DFO to find another option
- Community engagement began late fall and will resume after the holiday season

Future Projects

- Point Lake and Jay Projects are next two development projects in Mine Plan. Point Lake will come before Jay.
- Extends life of the mine at Ekati to 2034.
- Potential for other permitting considerations in the upcoming year related to the Jay Project.

POINT LAKE

- Open pit development
- 3 kimberlites - expected production of approximately 9 million carats
- Initial project development underway
- Engagement will begin early 2020
- Permitting applications to follow



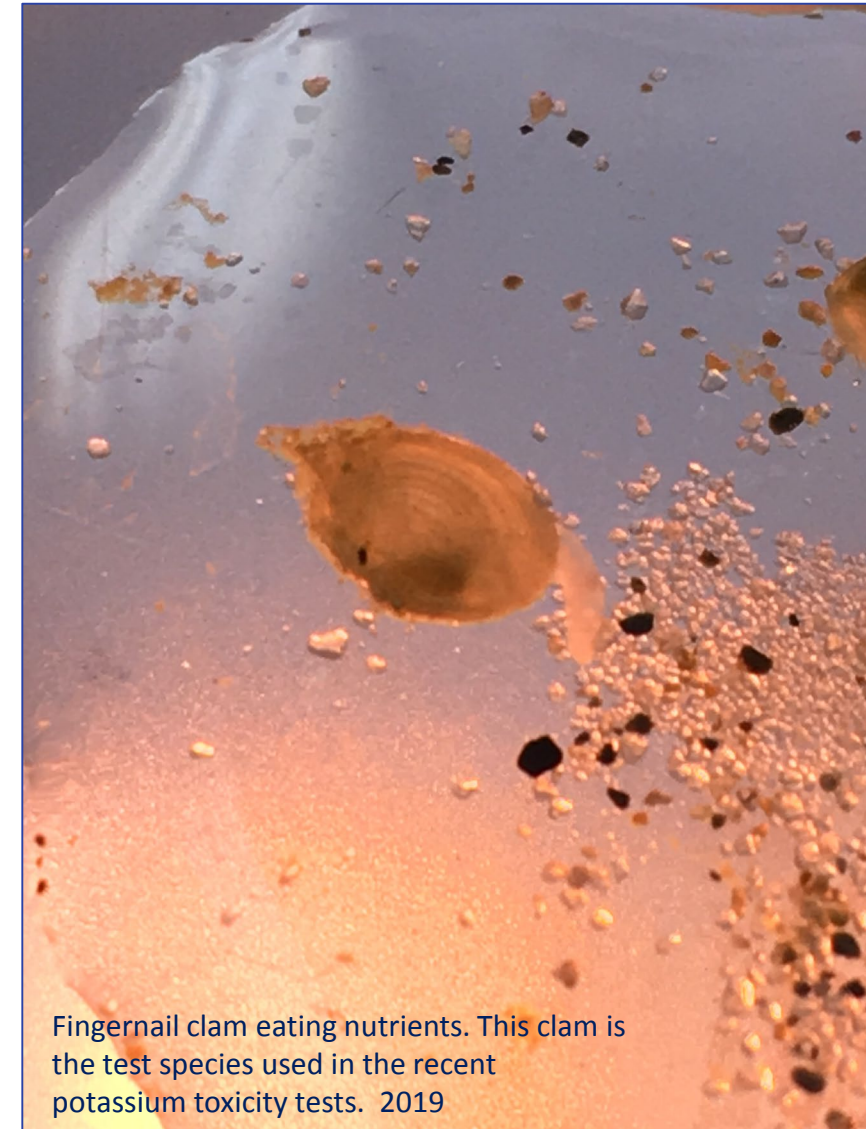
Fish and Aquatics

- Cujo Lake Outflow Special Study – surveys completed to confirm outflows are sufficient for spring spawning fish to access habitat when no discharge from King Pond Settling Facility)
- AC35 stream crossing monitoring – to verify unobstructed fish passage through stream AC35 as per DFO directive
- Continuation of Jay baseline work (Water Quality, Hydrology, sediment, etc.)
- Point Lake – collection of samples (Water Quality, plankton, benthos, etc.) to supplement baseline data in the area

Submissions to WLWB*

- Various Response Plans and versions: Fish, Potassium, Chloride, Phosphorus
- AEMP Annual Report, Potassium Toxicity Study Report V 1.0, Jay AEMP Design Plan & Response Framework V 1.1, Cujo Outflow Special Study Design
- Upcoming – AEMP Re-Evaluation Dec. 15, 2019

**not an exhaustive list*



Fingernail clam eating nutrients. This clam is the test species used in the recent potassium toxicity tests. 2019

Wildlife



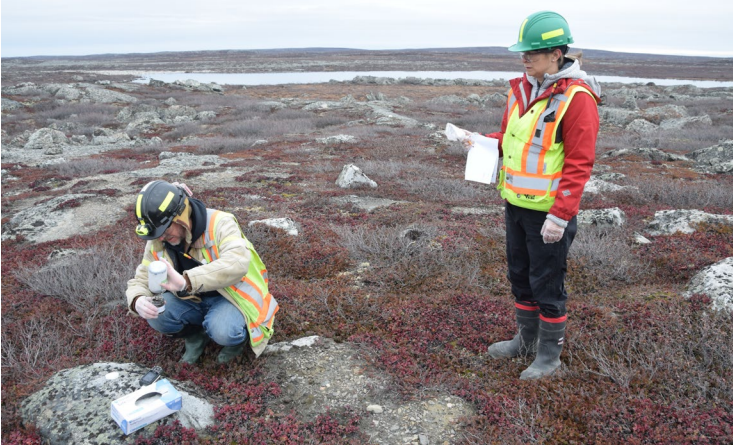
- Submission of 2018 WEMP Annual Report (March)
- Wildlife Camera Program - Processing of 2017 and 2018 photos complete. Start on 2019 ones.
- Camera report to be distributed in 2020
- Caribou Road Mitigation Plan (CRMP) Monitoring – short term Sable Road closures. Overall, behaviour consistent with insect avoidance.
- Annual bird monitoring program (March – end of June)
- North American Breeding Birds Survey (June)
- Ongoing mitigation and monitoring



Air and Land



Dustfall Monitoring/Sampling 2019



- Dustfall program June to September – Misery, Sable, Jay Roads, airport and background.
- EnviroKleen – application to Sable Road in July 2019 (applied over 400,000L in three application periods).
- Meteorological and Ambient Air Quality Monitoring are ongoing

Dust Suppression Study

- A Final Report will be circulated in early 2020. A best practices document is anticipated to be released following this.

WRSA Seepage Monitoring

- 2018 Waste Rock and Waste Rock Storage Area Seepage Survey Report submitted (April 2019)

MDMER

- Integration of these new regulations into the sampling regime.
- Working with GNWT to help create equivalency with the Waters Act.

Closure and Reclamation

LLCF Progressive Reclamation

- Reclamation goal for the LLCF is the design and construction of a long-term cover that will physically stabilize the PK, with a landscape that will be safe for human and wildlife use
- Determine the vegetation elements of the LLCF final cover system to physically stabilize processed kimberlite.
- 2019 work included surface water management, mounding as erosion mitigation, seeding with annual grasses, monitoring existing species trials, seed collection near Ekati, utilizing seed collected in Kugluktuk (2018), establishing topsoil propagule islands.

Streambank
Stabilization



Mounding as
erosion control



Closure and Reclamation

Old Camp Reclamation

- Completion of remedial excavations
- Confirmatory samples show no further work required at Old Camp
- Next step is return of security

Panda/Koala Underground Closure

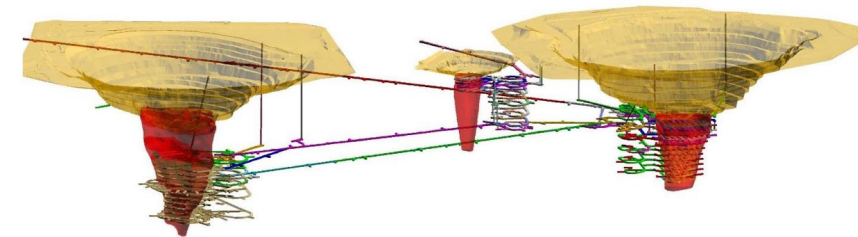
- Panda and Koala North Underground mineral reserves exhausted and operations ceased (November 2018); all salvageable equipment, hazardous materials, and other waste products removed
- Heating, electrical, and ventilation were all shutoff on February 26, 2019
- Authorization to place PK in the underground workings received (WLWB) and deposition has begun

ICRP Version 3.0

- Review proceeded in 2019. Technical workshop January 2019, review comments (200+) and responses are all with the WLWB. Expected to go to the Board this month with a Decision released in early 2020.



PK line leading to Panda Pit. 2019



Traditional Knowledge

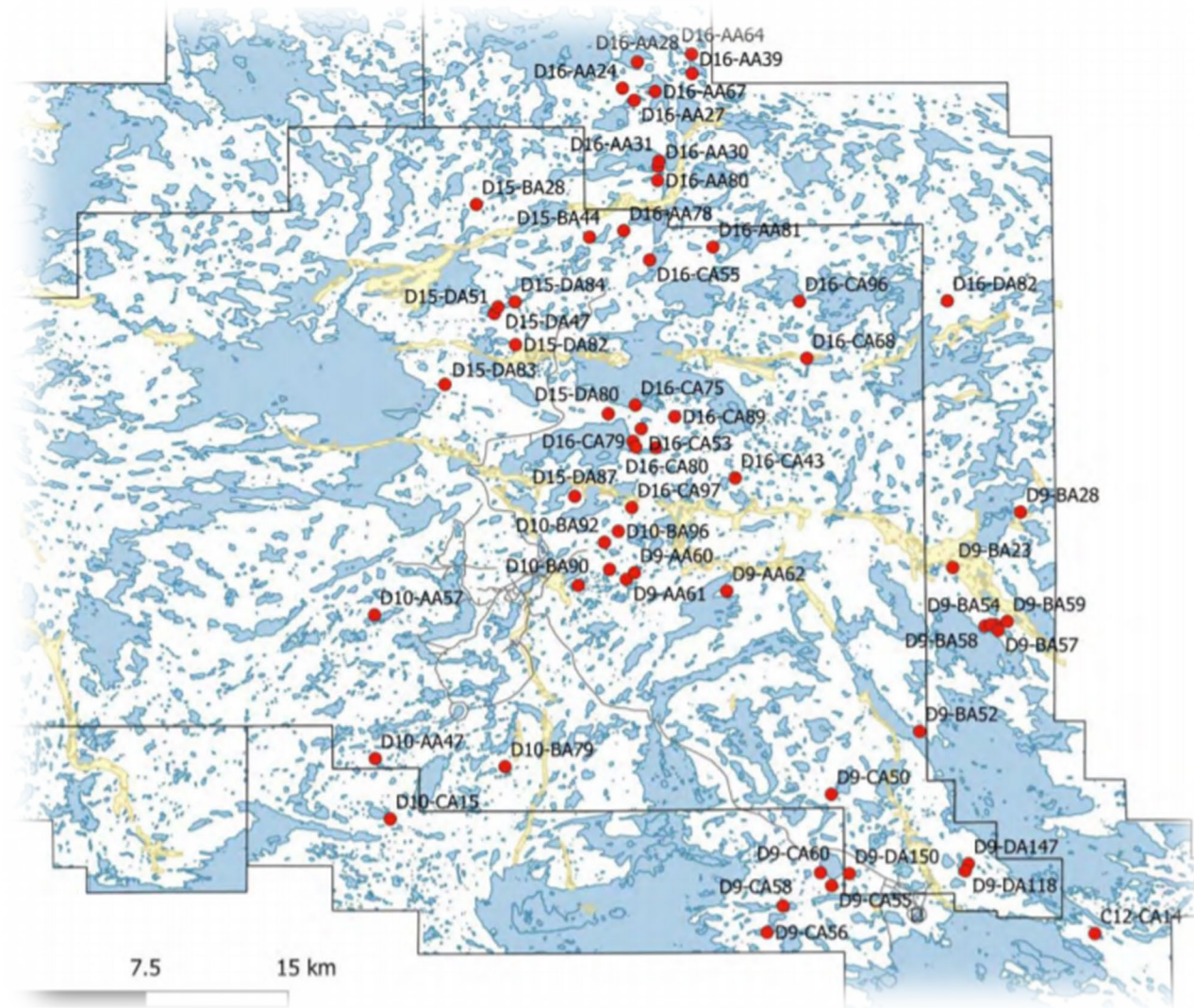


KIA Site Tour – October 2019

- Community Tours
- TK Community Based Projects for 2019 were:
 - Tilcho – Boots on the Ground Caribou Monitoring
 - LKDFN - Moccasins on the Ground Caribou Monitoring
 - YKDFN – Dene on-the-land Caribou Monitoring Program

Exploration

- Drilling completed across the entire Ekati property this summer season
- 6 new kimberlites found
- Further analysis will happen this fall
- Program(s) carried out at Point Lake
- Permitting applications related to Point Lake work coming in 2020



Thank You – Questions?

