

The EKATI MONITOR

Issue 20, Autumn 2019

In this issue:

- What's Coming Up?
- Annual Report
- Annual Site Visit
- Project Updates
- Ekati Fact



Agency Directors Tim Byers and Emery Paquin observing Lynx Pit during the Agency's annual site visit on July 23, 2019.

What's Coming Up?

From the Agency:

- ▶ Christmas Open House (Dec. 3, 4:30-6pm)
- ▶ 2019 Annual General Meeting (Dec. 4)
- ▶ Society Members' Wildlife & Closure Workshop (Feb. 12-13, 2020)

Dominion Submissions to the WLWB:

- ▶ Jay Aquatic Effects Monitoring Program Design Plan (Dec. 15)
- ▶ Cujo Outflow Special Study (Jan. 2020)
- ▶ Old Camp Refund Request (Jan.—Feb., 2020)
- ▶ Environmental Impact Report (TBD)

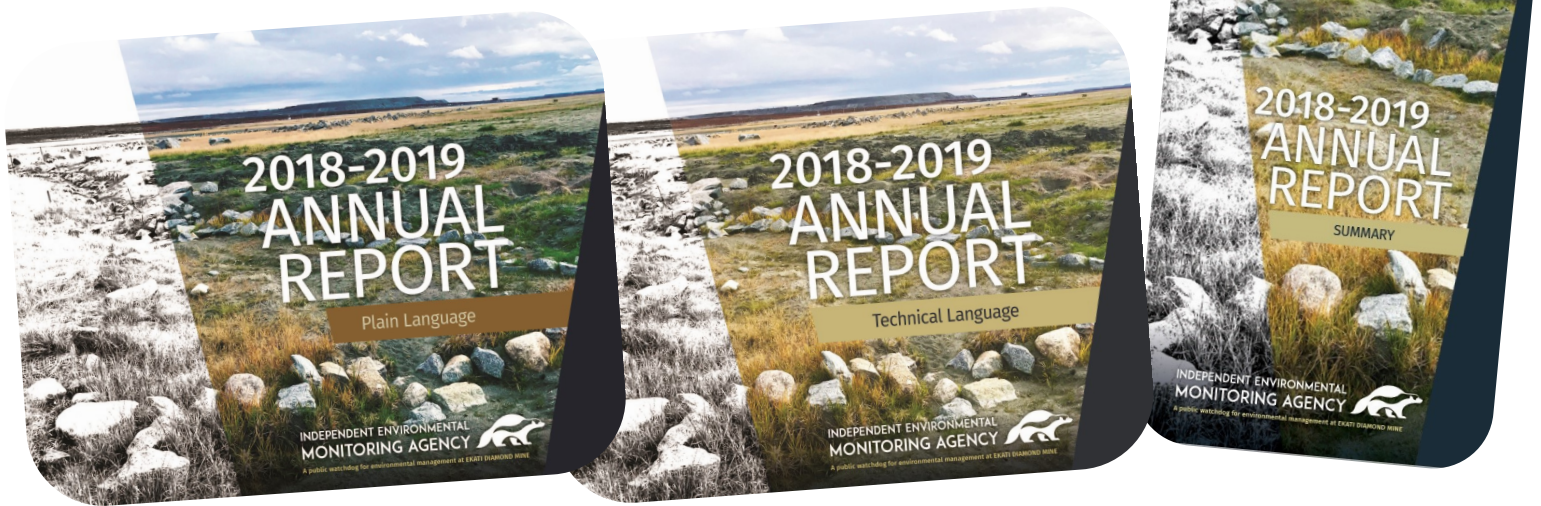
To participate in Wek'ézhii Land and Water Board (WLWB) review and comment processes, go to www.wlwb.ca for more information.

Questions about upcoming reviews or events? Call IEMA: 867-669-9141

IEMA's 2018-2019 Annual Report

The Agency is pleased to share their 2018-2019 Annual Report. There are two versions of the report: the Technical Language version and the Plain Language version. For the greatest amount of detail and scientific data, see the Technical version of the report. For a shorter, less technical report, see the Plain Language version. To see only Agency recommendations to regulators, governments, and Dominion, check out the Summary of Recommendations brochure.

The reports and brochure are available digitally on our website (www.monitoringagency.net) and in hard copy at our office in downtown Yellowknife.



Agency Annual Ekati Site Visit

Staff and directors made their way to the Ekati mine site on July 23, 2019 for what was to be the first of two day-long site visits. Our itinerary included seeing the now closed Misery Pit, the Misery waste rock storage area (WRSA), and the Lynx Pit (see opposite page for map of this area).

The Agency also visited the Panda Diversion Channel (photo on right), which is a great opportunity in the summer months. This time of year allowed the Agency to confirm growth of vegetation along the shoreline, or riparian zone, as well as presence of fish in the channel. The Agency also looked for slumping and stability of diversion walls.



A highlight of this visit was a tour of the process plant. The Agency has not seen the process in many years.

Unfortunately, the planned second day to cover the rest of the site (on the itinerary: waste management facility, the Long Lake Containment Facility, landfarm, Pigeon area, Sable Road and area) had to be postponed until next year. The Agency will continue to work with Dominion to ensure the time required is allotted for future site visits, and thanks them for their efforts to accommodate our requested itinerary items.

Project Updates

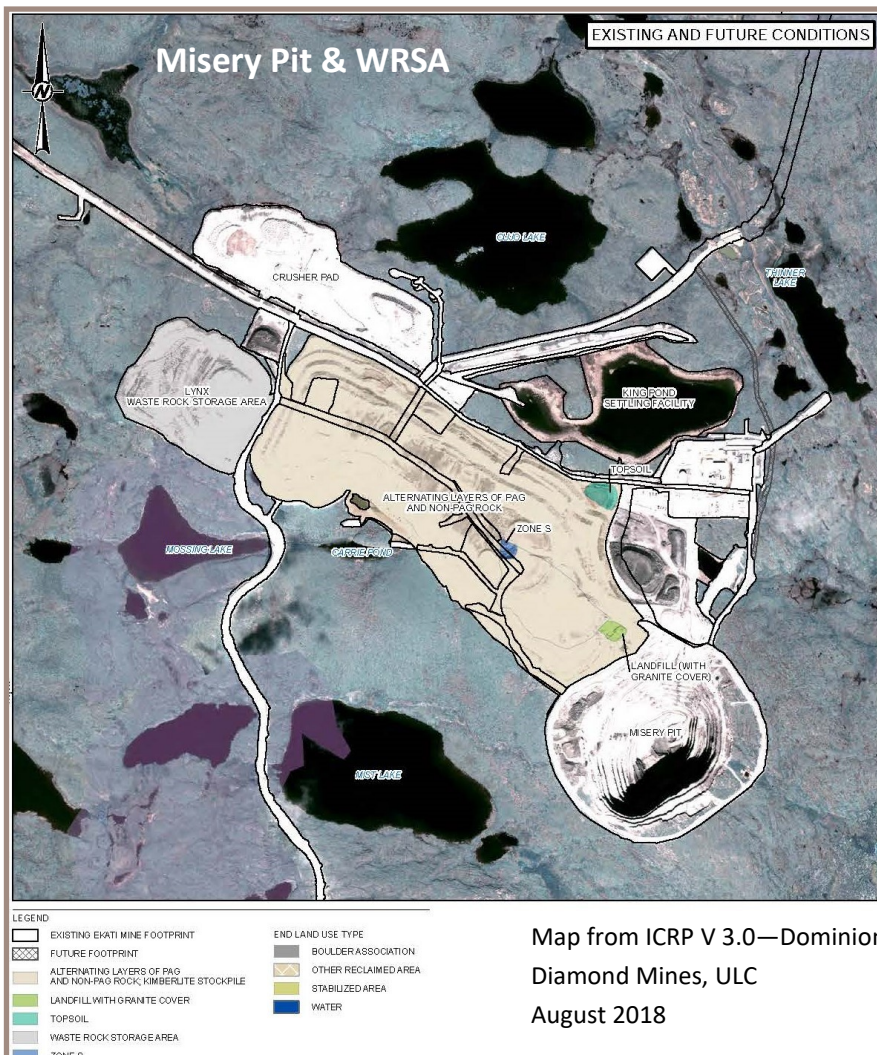
Annual AEMP

Dominion released their 2018 Annual Aquatic Effects Monitoring Program (AEMP) Report in March of 2019. The Agency was satisfied with the comprehensive report, and submitted a handful of recommendations in July. Dominion responded in September, providing more information regarding IEMA's comments on mercury in fish in Kodiak Lake, and selenium in slimy sculpin and whitefish in Leslie and Moose lakes. To see the Agency's full comments, and Dominion's responses to all commenters, check out the Agency's [Incoming Correspondence](#) section on our website for 2019, or feel free to call us to discuss at 867-669-9141.

WEMP

The 2018 Report of Dominion's Wildlife Effects Monitoring Program (WEMP) was also released in March 2019, and the Agency submitted comments regarding wildlife camera reporting, road traffic data, clarifying which monitoring data is used to trigger management actions, zone of influence for caribou, and using GPS caribou collar data to better analyze caribou movements through the Ekati mine site. Dominion provided responses to Agency comments in August, and on the last point, Dominion agreed that there is value in understanding larger scale movements of caribou throughout the site. From their response: "The next analysis of site permeability will be provided in the 2020 camera report and in a Zone of Influence Report."

Misery Security



Dominion requested security adjustments for progressive reclamation of the Misery WRSA in January 2018. Work they have completed to date includes placing 5m of rock cover on the majority of the Misery pile. The WLWB directed Dominion to work with GNWT to find consensus on the appropriate amount of security to return and what a reasonable amount of hold back should be. This year, they came to an agreement that the hold back should be \$4.6 million to compensate for uncertainty regarding the depth of the active layer. The final security refund is \$7 860 181.

The agreement was approved by the WLWB on November 21, 2019.

"The Agency has always supported progressive reclamation at the Ekati site and believes that the most effective way to encourage future progressive reclamation efforts is to have a clear overall process for the calculation of monitoring and future liabilities." from the Agency's official comments to the WLWB about Misery Security

CONTACT US

P.O. Box 1192
203, 5006 50 (Franklin) Ave.
Yellowknife, NT, X1A 2N8
Phone: (867) 669-9141
Fax: (867) 669-9145
www.monitoringagency.net

DIRECTORS

Jaida Ohokannoak
(Chairperson)

Appointed by Kitikmeot
Inuit Association

Emery Paquin
(Vice-Chairperson)

Appointed by Dominion
Diamond/Canada/GNWT

Kim Poole
(Secretary/Treasurer)

Appointed by Tłı̨chǫ
Government

Ron Allen
Appointed by Dominion
Diamond/Canada/GNWT

Tim Byers
Appointed by Akaitcho
Treaty 8

Jesse Jasper
Appointed by Dominion
Diamond/Canada/GNWT

Bill Slater
Appointed by North Slave
Métis Alliance

STAFF

Marc Casas
Executive Director

Shannon Moore
Communications &
Administrative Specialist

Who Are We?

HEMA (the Agency) is the public watchdog for environmental management at the Ekati mine. The Agency was set up in 1997 under the Environmental Agreement, which requires Dominion Diamond Mines ULC (Dominion) and the federal and territorial governments to protect the environment and land-based way of life of Aboriginal peoples of the area.

We make recommendations to Dominion, government and regulators on how best to protect the environment at Ekati. We are set up as a non-profit society in the Northwest Territories. The Agency's Board has seven Directors appointed by our Society Members:

- Akaitcho Treaty 8 (łutsel K'e and Yellowknives Dene First Nations)
- Tłı̨chǫ Government
- Kitikmeot Inuit Association (KIA)
- North Slave Métis Alliance
- Government of Canada (Crown Indigenous Relations & Northern Affairs Canada—CIRNAC)
- Government of the Northwest Territories
- Dominion Diamond Mines, ULC

Our Directors are independent of their appointing parties and work together in the best interests of the environment and the people affected by Ekati.

We have two staff members and a resource library of information about Ekati in our office in Yellowknife. Please do not hesitate to contact us if you have questions or concerns about the Ekati mine.

Ekati Facts: Processed Kimberlite

What is Processed Kimberlite?

Processed Kimberlite (PK) or "tailings" is the waste product after diamonds are removed from the kimberlite ore. It is similar to sand in grain size or smaller.

Where is PK Stored?

PK is deposited into the Long Lake Containment Facility (LLCF), or finished open pits such as Beartooth, and potentially Panda and Koala Pits.



Above: Close-up of
Fine PK in the LLCF



Image from ICRP V 3.0

Left: An image of
the Long Lake
Containment
Facility where
Dominion is
experimenting with
the best ways to re-
vegetate the area.