

Presentation to
Alexis Arrowmaker School
Wekweti

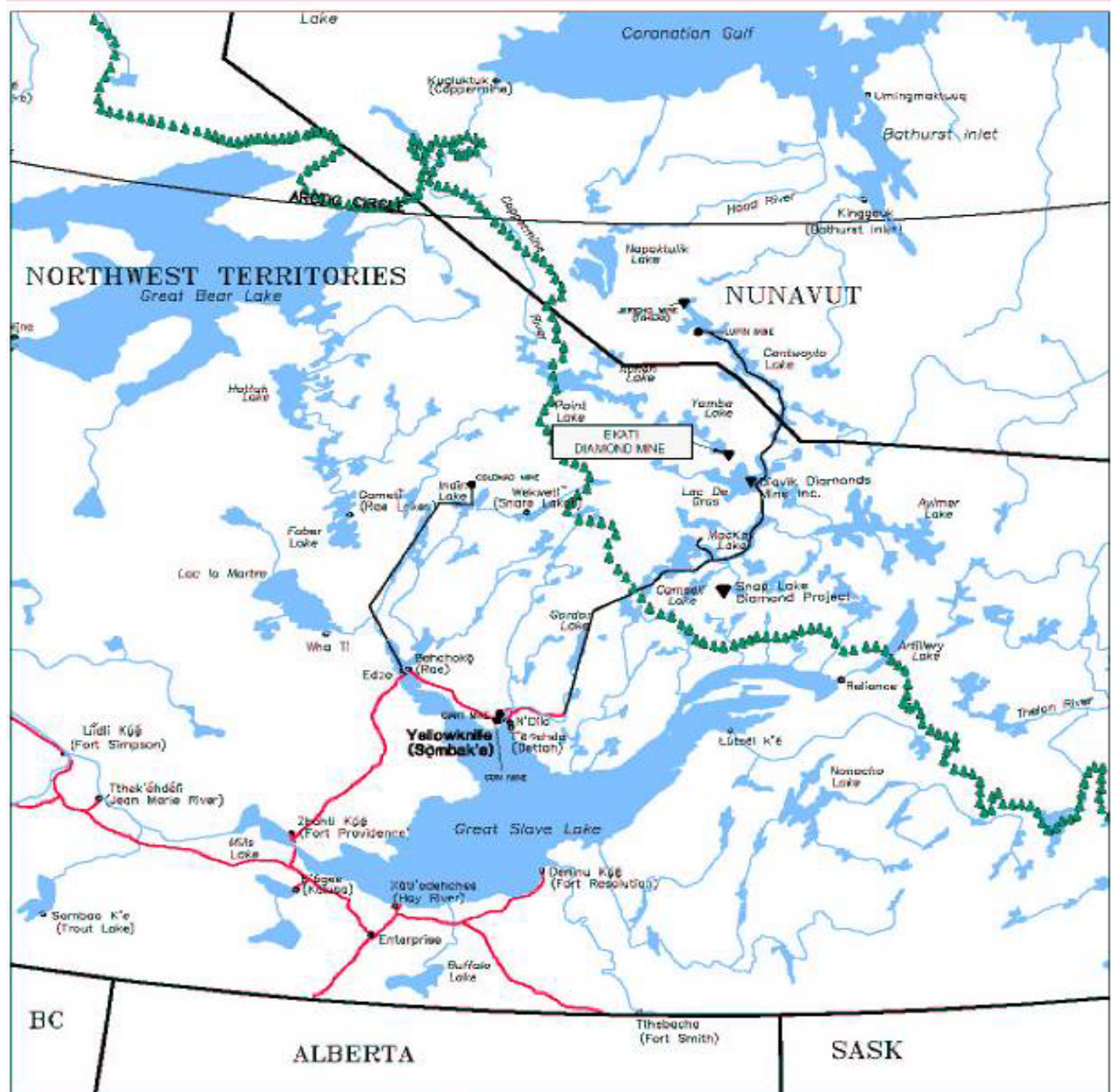
September 21, 2006

Independent Environmental Monitoring Agency



Independent Environmental Monitoring Agency

- **Watchdog of the environment at Ekati diamond mine**
- **7 members: Tlicho, Akaitcho, Inuit, Metis, BHPB, GNWT, Canada**
- **Tony Pearce**
Director appointed by Tlicho Government



Ekati Mine

- Opened in 1998
- 2 pits have finished digging, 4 more pits are being mined
- Underground mining has begun



Panda Pit – a few years ago



Photo

BHP
Diamonds

Panda Pit

– June 2003



Waste Rock Pile



Diamond Production

140,000 tonnes/day of rock



2 litres diamonds

Monitoring Focuses on:

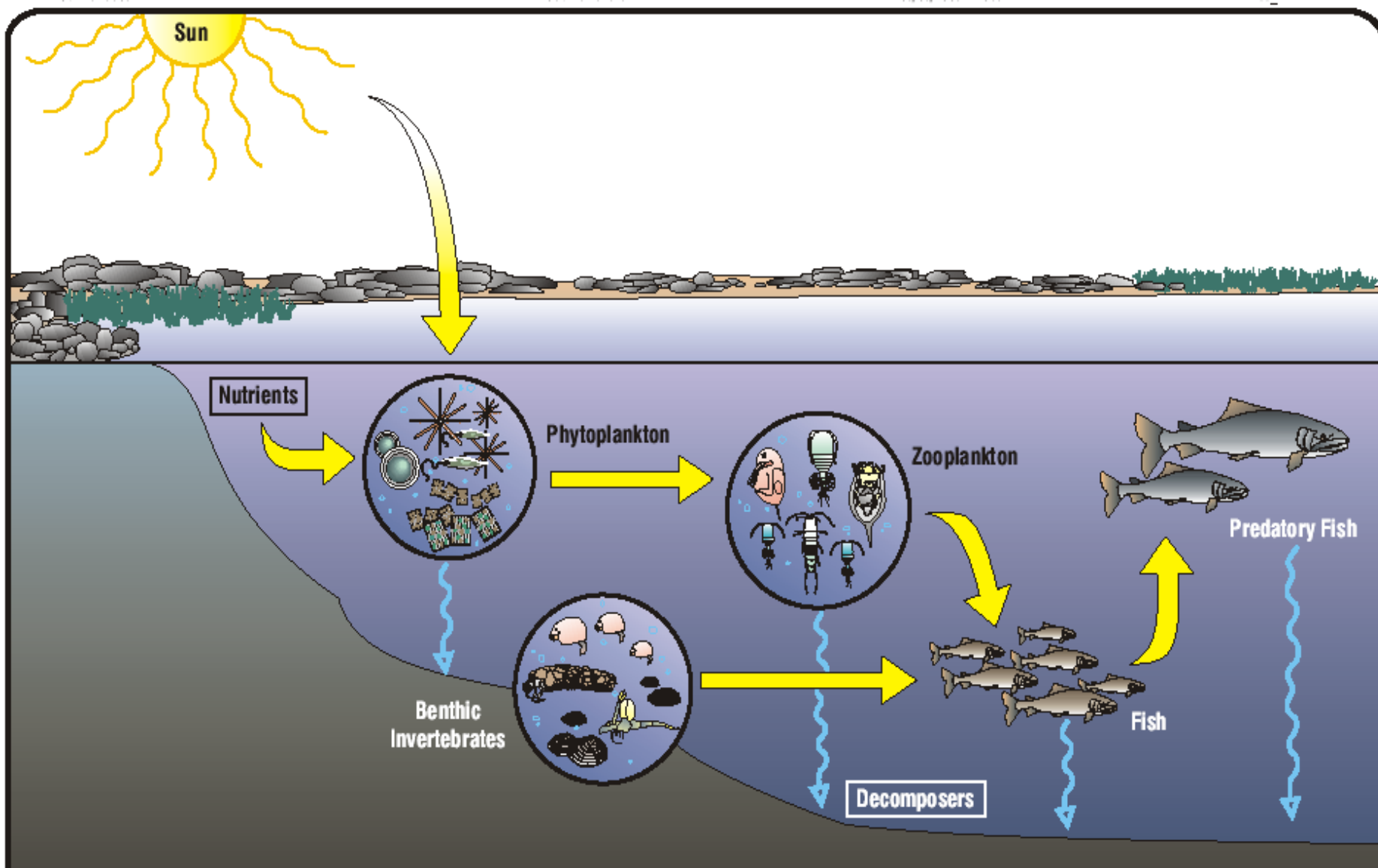






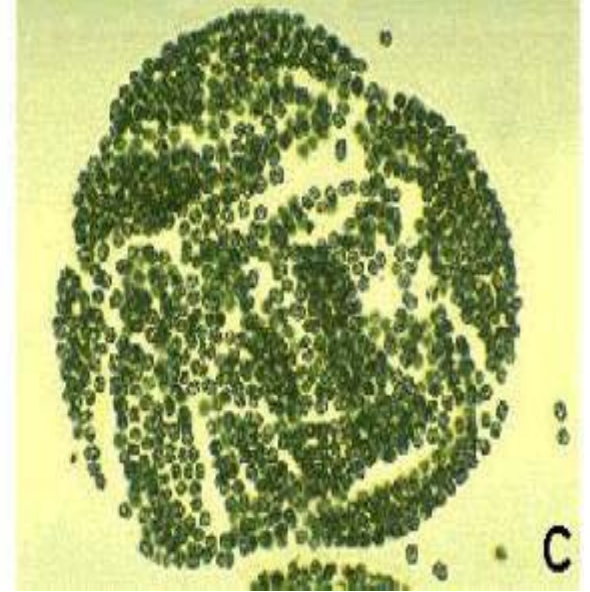
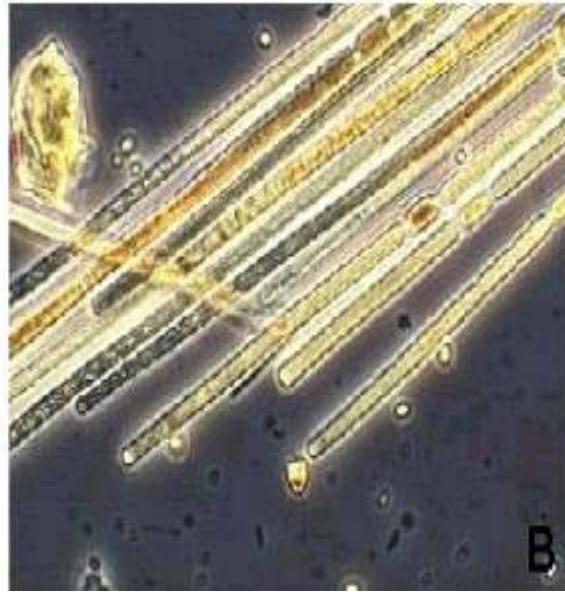
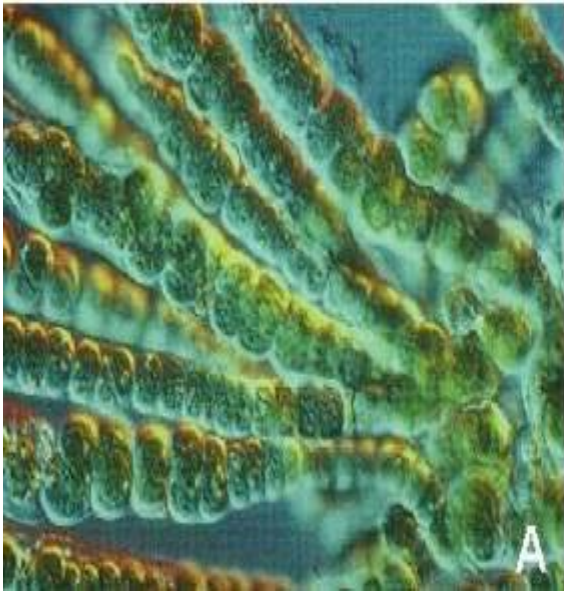
CONTAMINANTS in PLANTS ?





Conceptual Model of Lake Aquatic Ecosystem
in the Koala Watershed

Plant Plankton



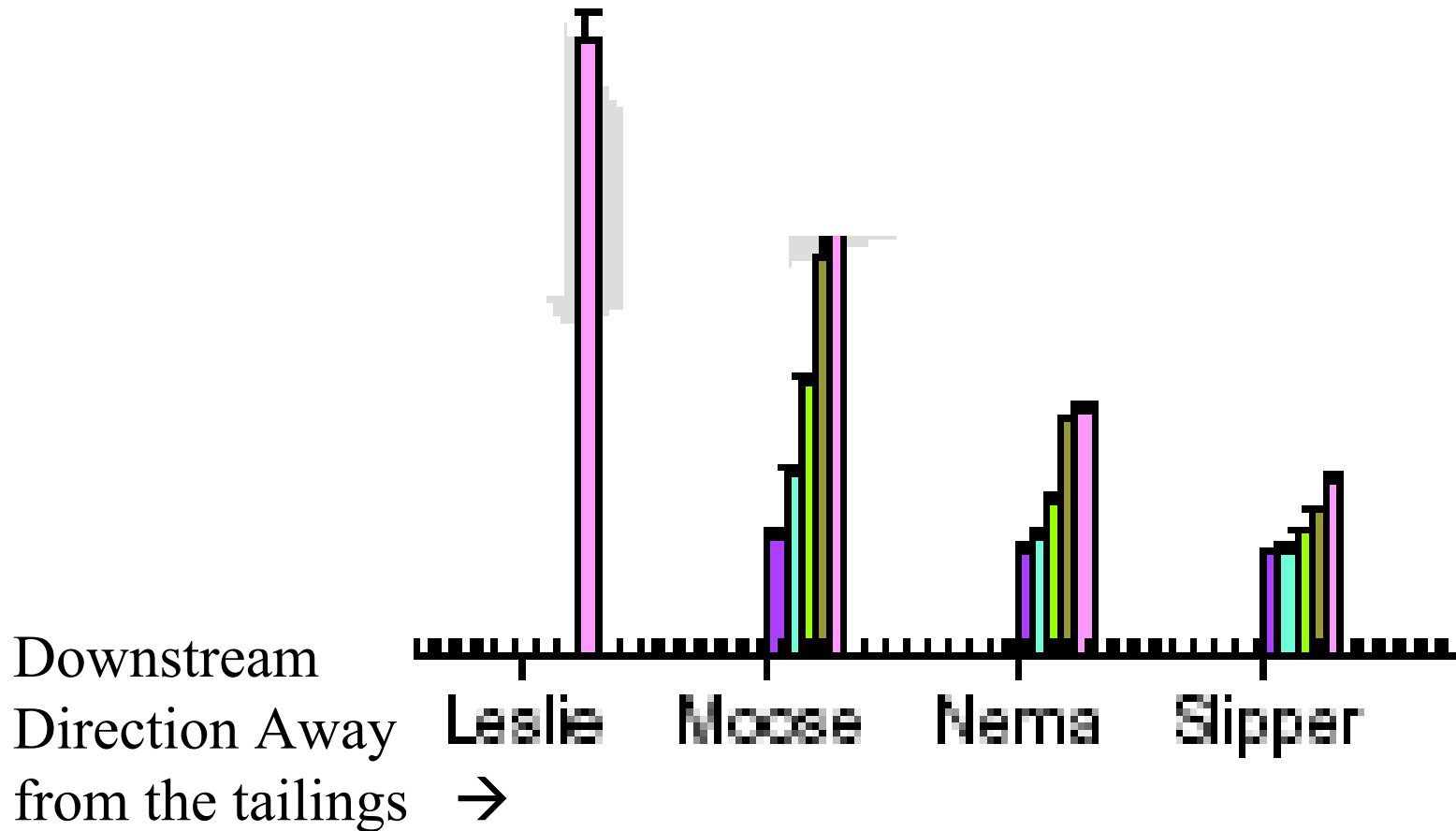
Animal Plankton



Photo: A magnified
picture of Daphnia



Amount of contaminants decreases downstream of Ekati but increases every year



What has been found in past years?

- Small changes have been found in water quality and the fish
- Most of these changes were predicted before the mine was built

Dene Knowledge and Science

- Both are important for monitoring the environment



- Similarities : Dene Knowledge and Science
 - Both have experts
 - Both have their own languages
 - Both require education
- Better decisions when both are used.

Caribou

- Dene and Inuit set up Inuksuit locations



Dene doing wolverine studies



Stay in school, listen to elders, go
out on the land!!

