



Dominion Diamond Ekati Corporation

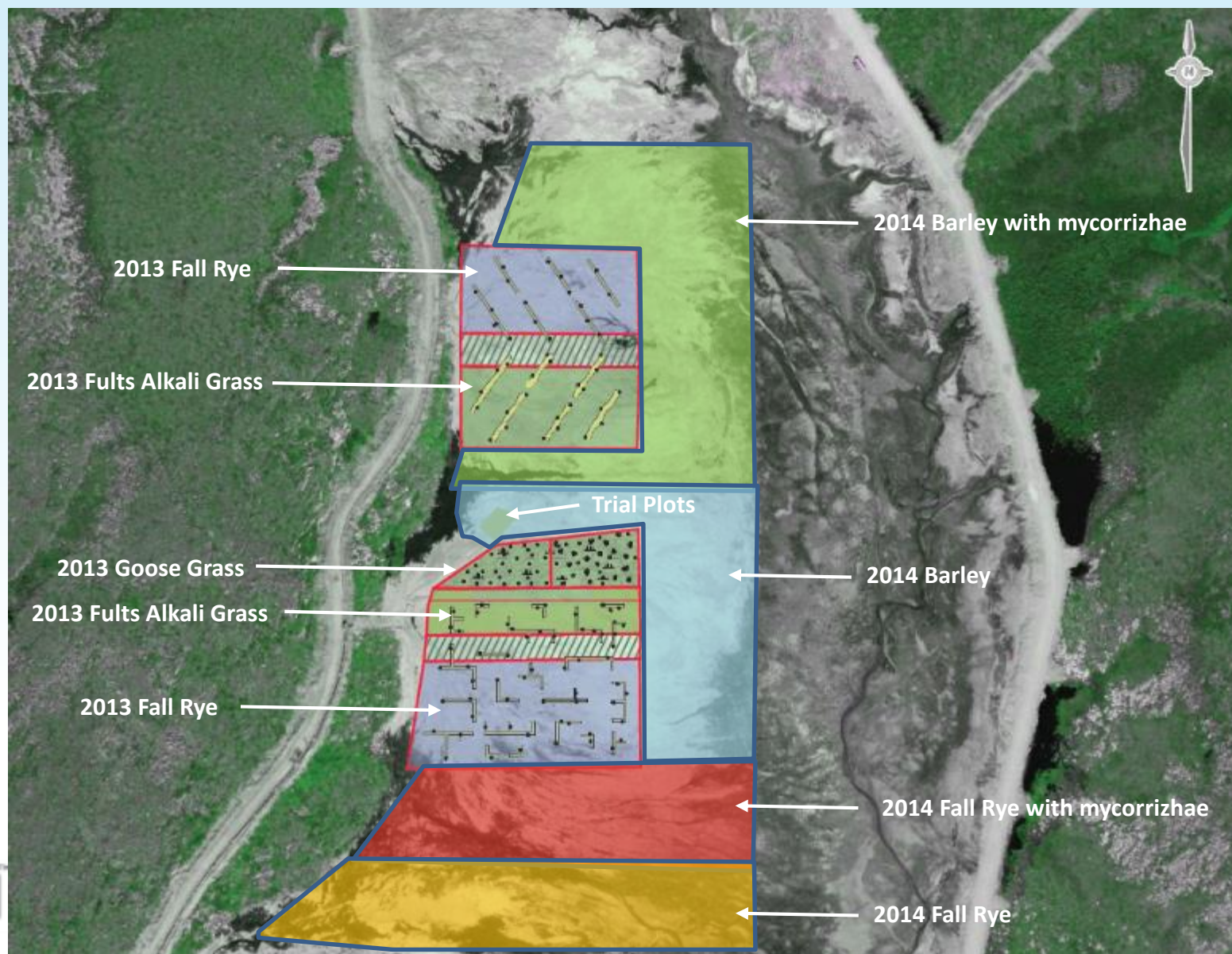
IEMA Workshop
December 3, 2014

Cell B Reclamation & Research

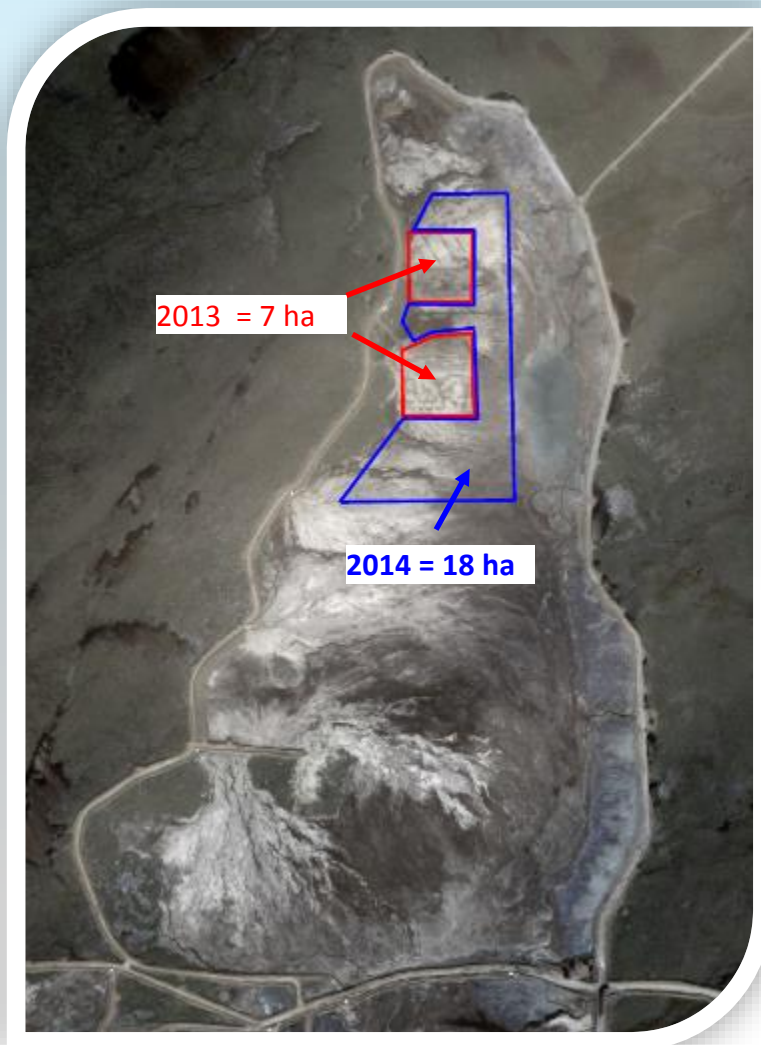
Design and construction of a long term cover on the LLCF with a landscape that will be safe for human and wildlife use

- Evaluate vegetation as a long term cover option
 - Annual versus perennial ground cover on PK
 - Conduct species trials on PK
 - Evaluate PK amendments
 - Evaluate equipment options
- Evaluate rock as a component of the cover design
 - Influence on vegetation growth
 - Erosion Control

2013 and 2014 Seeding



Cell B Total Seeding To Date = 25 ha



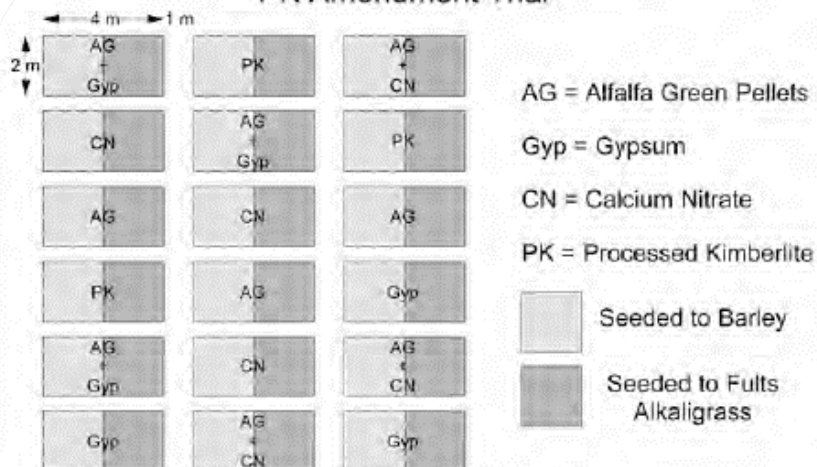
Species Trials

Sedge and Cotton Grass Seedlings



PK Amendment Trials

PK Amendment Trial



2013 Lessons Learned (D6 & Breaking Disc)



Step 1: Harrowing (Initial Soil Break Up)



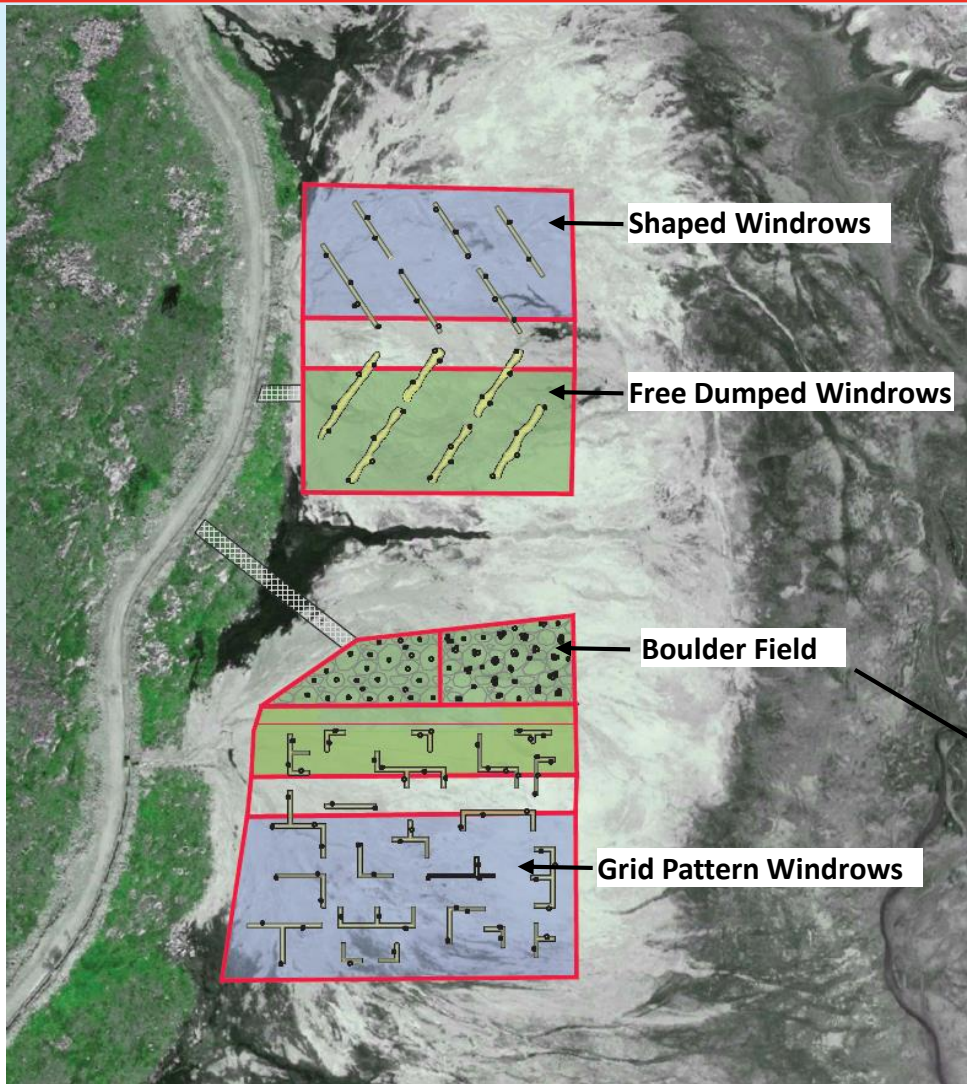
Step 2: Broadcast Seeding



Step 3: Harrowing and Rolling



2013: Rock Placement

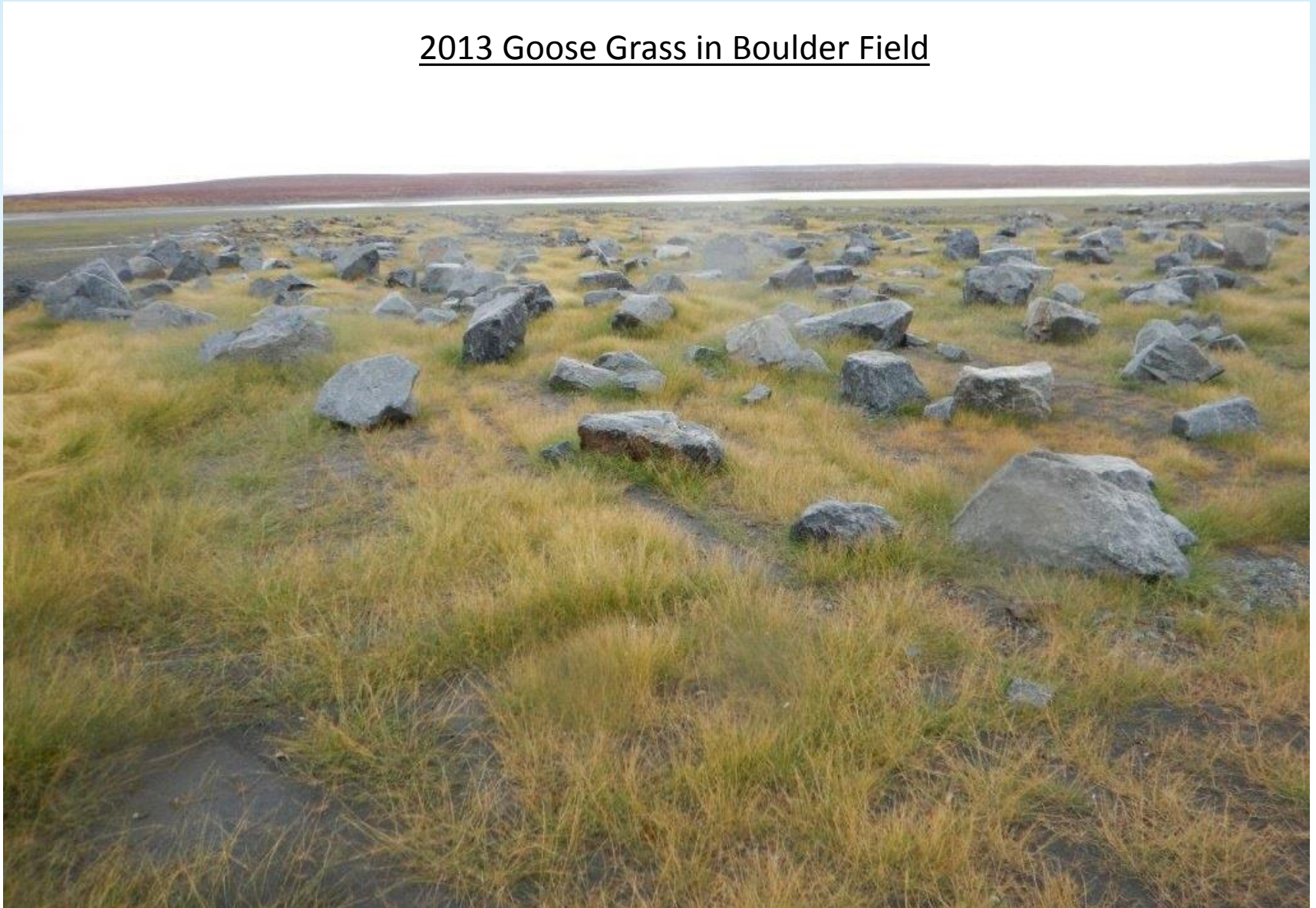


2014 Observations



2014 Observations

2013 Goose Grass in Boulder Field



2014 Observations

2013 Fall Rye in Windrows



2013 Fults Alkali Grass in Windrows



2014 Observations

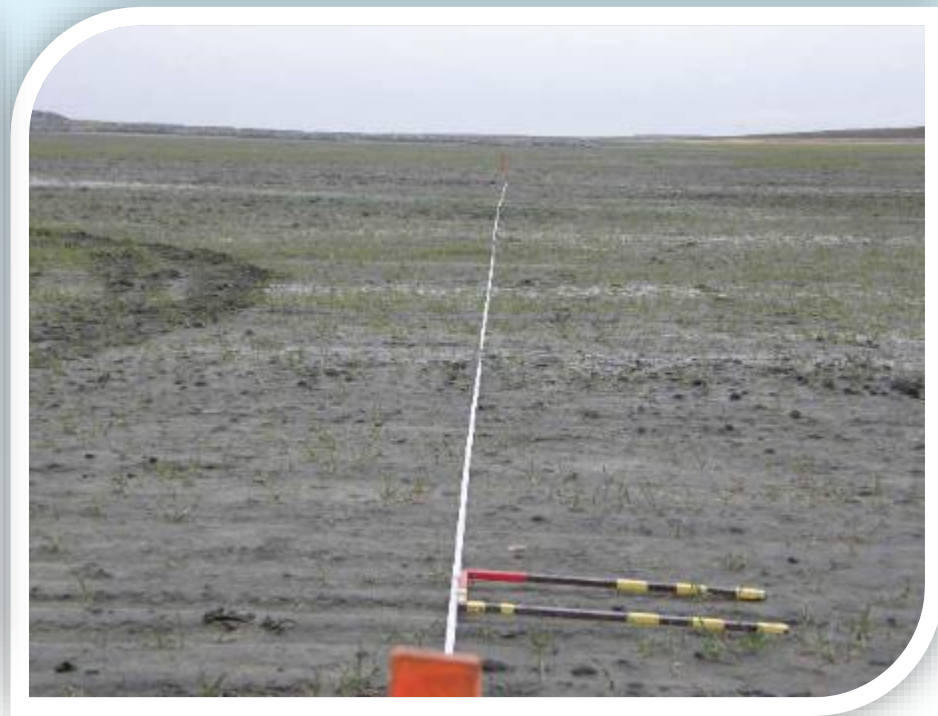


2014 Observations

2014 Barley



2014 Fall Rye



Cell B Future Work

Next year's and future reclamation research at Cell B is in the planning stages and is based on monitoring conducted in 2014.

- On going monitoring of 2013 rock placement and 2013-2014 seeding
- Continuation of species trials and monitoring
- Surface water management
- Local species harvesting
- Seeding additional areas
- Reseeding PK amendments

Old Camp Reclamation

- Old Camp Closure and Reclamation Plan Approved by WLWB on April 14, 2014
- Reclamation of the South Pond PKCA commenced in July of 2014 and ended in October
 - Upgrades to Haul Road
 - Change Management Plan for Airport Traffic
 - Pumping out of Water
 - Removal of Processed Kimberlite (PK)
 - Removal of Liner Materials
 - Breaching of South Berm
 - Grading of esker berms to promote natural drainage
- Remaining Activities for South Pond
 - Channel construction to route runoff through the reclaimed area
 - Minor grading and housekeeping of liner debris
 - Water quality monitoring

South Pond Before Reclamation



After Reclamation Looking South



After Reclamation Breached South Berm



After Reclamation Looking South



Panda Diversion Slope Stabilization

- Final Phase III of construction was completed from January to May 2014
- PDC construction was conducted according to Construction Drawings and Specifications
 - **Site preparation** included ice pad and access road
 - **Mining activities included** drilling, blasting, excavating and hauling, scaling, defining the lower slope and bulk clean-up
 - **Material placement** which included placement of erosion protection and waste rock fillets, grading and sediment control berm construction
 - **Clean-up activities** which included protective ice pad clean-up and notching the ice pad for freshet flow.
- Construction report for all three construction phases was submitted to DFO and the WLWB in October of 2014
- Relinquishment of financial security for Panda Division Channel Stabilization will be requested as part of the 2014 Annual Progress Report.

Mining Activities



Material Placement and Clean Up

