

**Presentation to**  
**Kaw Tay Whee School**  
**Dettah**

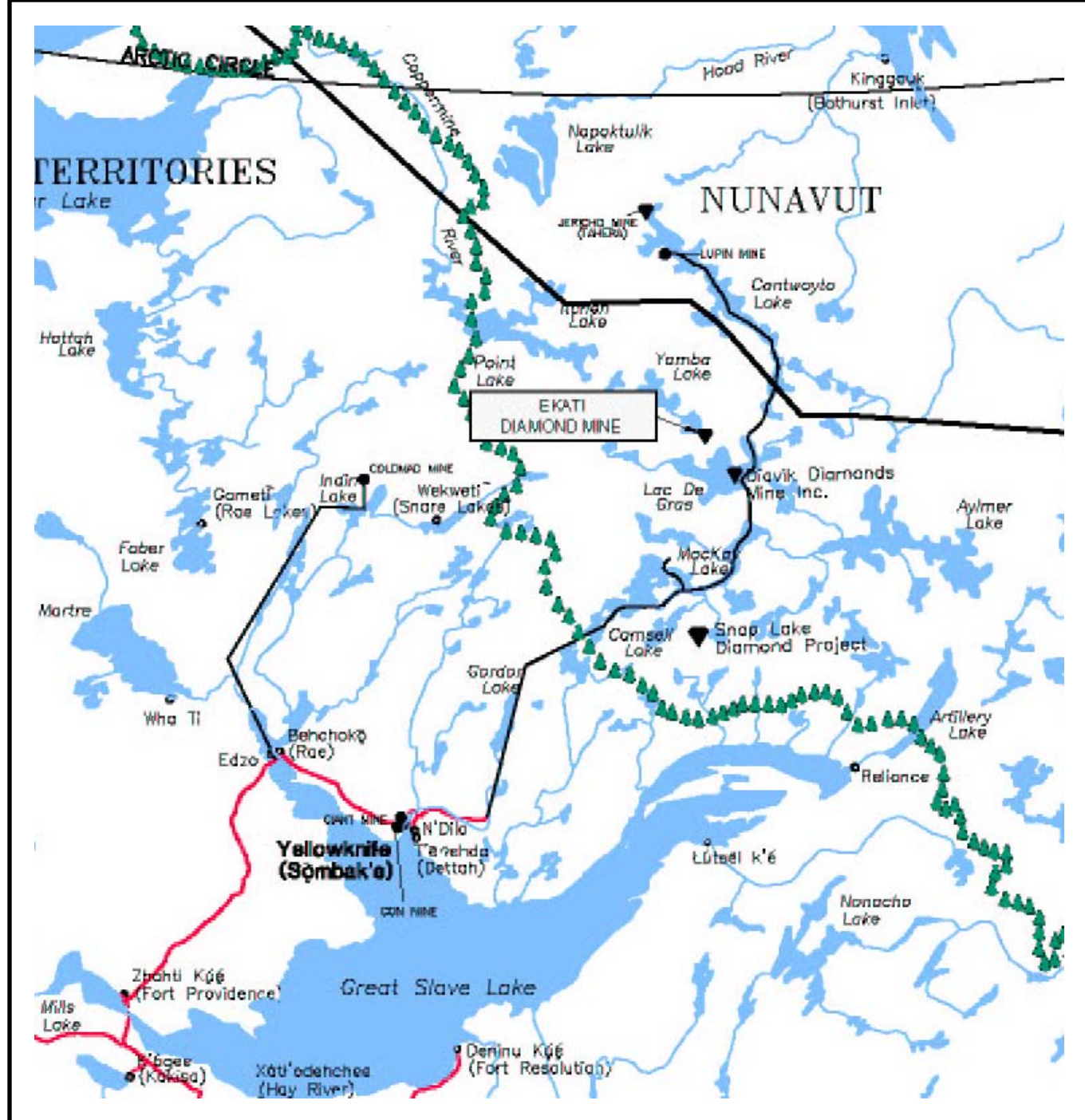
**September 23, 2005**

**Independent Environmental Monitoring Agency**



# **Independent Environmental Monitoring Agency**

- **Watchdog of environmental management at Ekati diamond mine**
- **7 members: Akaitcho, BHPB, GNWT, Canada, Inuit, Dogrib, Metis**
- **Tim Byers**  
Director for Akaitcho (Yellowknives Dene First Nation and Lutsel K'e First Nation)



# Ekati Mine

- Opened in 1998
- 2 pits have finished digging, 4 more pits are being mined
- Underground mining has begun



# Panda Pit – a few years ago



Photo

BHP  
Diamonds



# Panda Pit

– June 2003



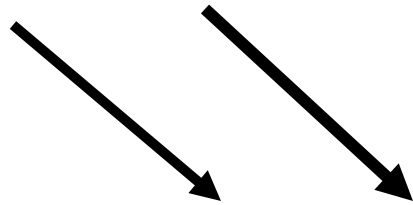
# Misery Waste Rock Pile



The Misery fuel storage tank and camp

# Diamond Production

140,000 Tonnes/ day of rock



2 L diamonds



# Monitoring Focuses on:





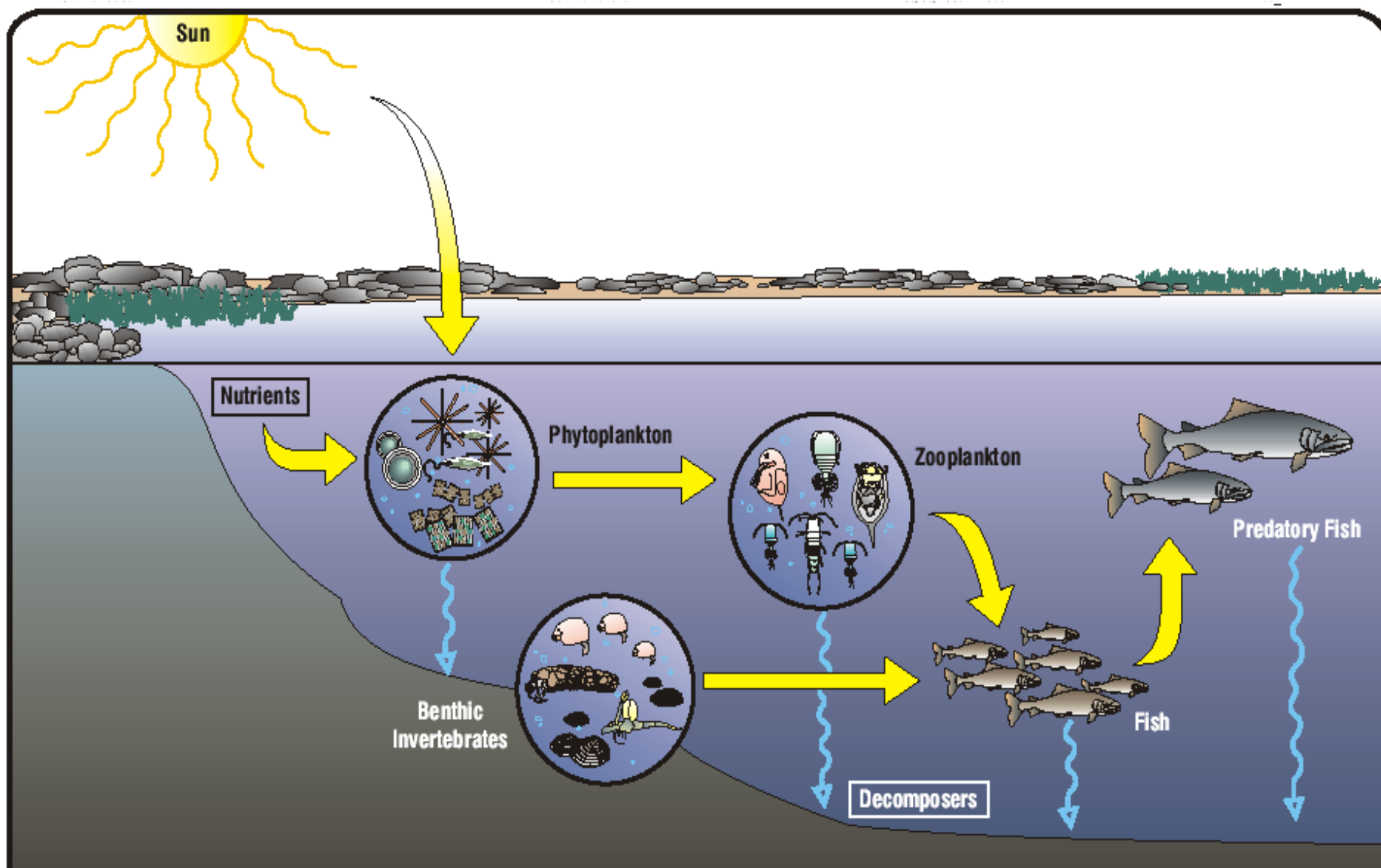




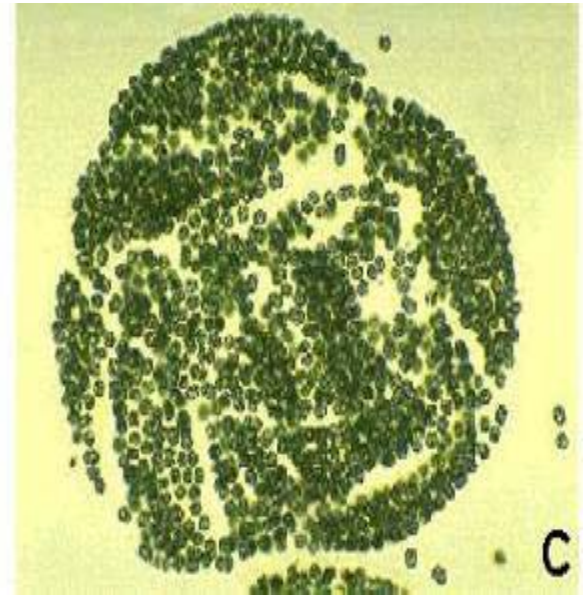
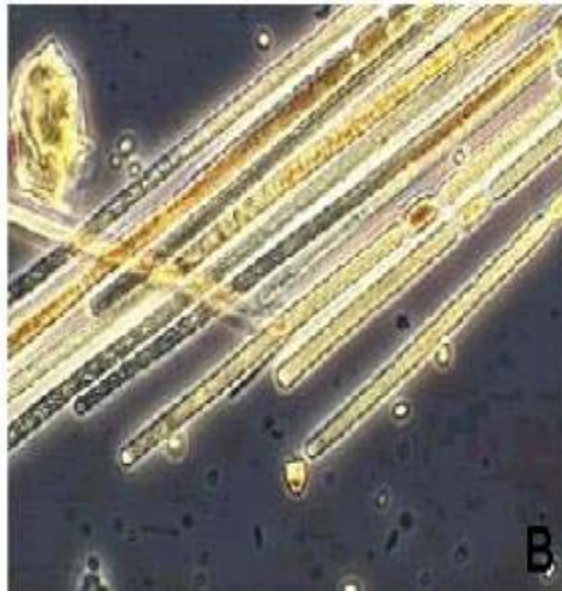
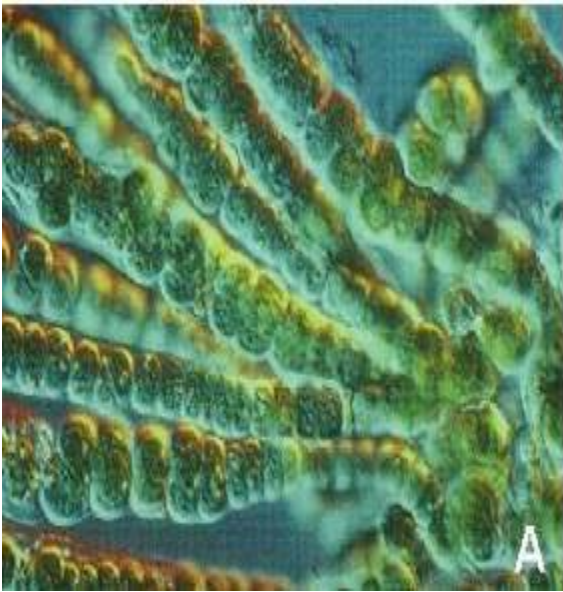
# CONTAMINANTS in PLANTS ?







# Plant Plankton



# Animal Plankton



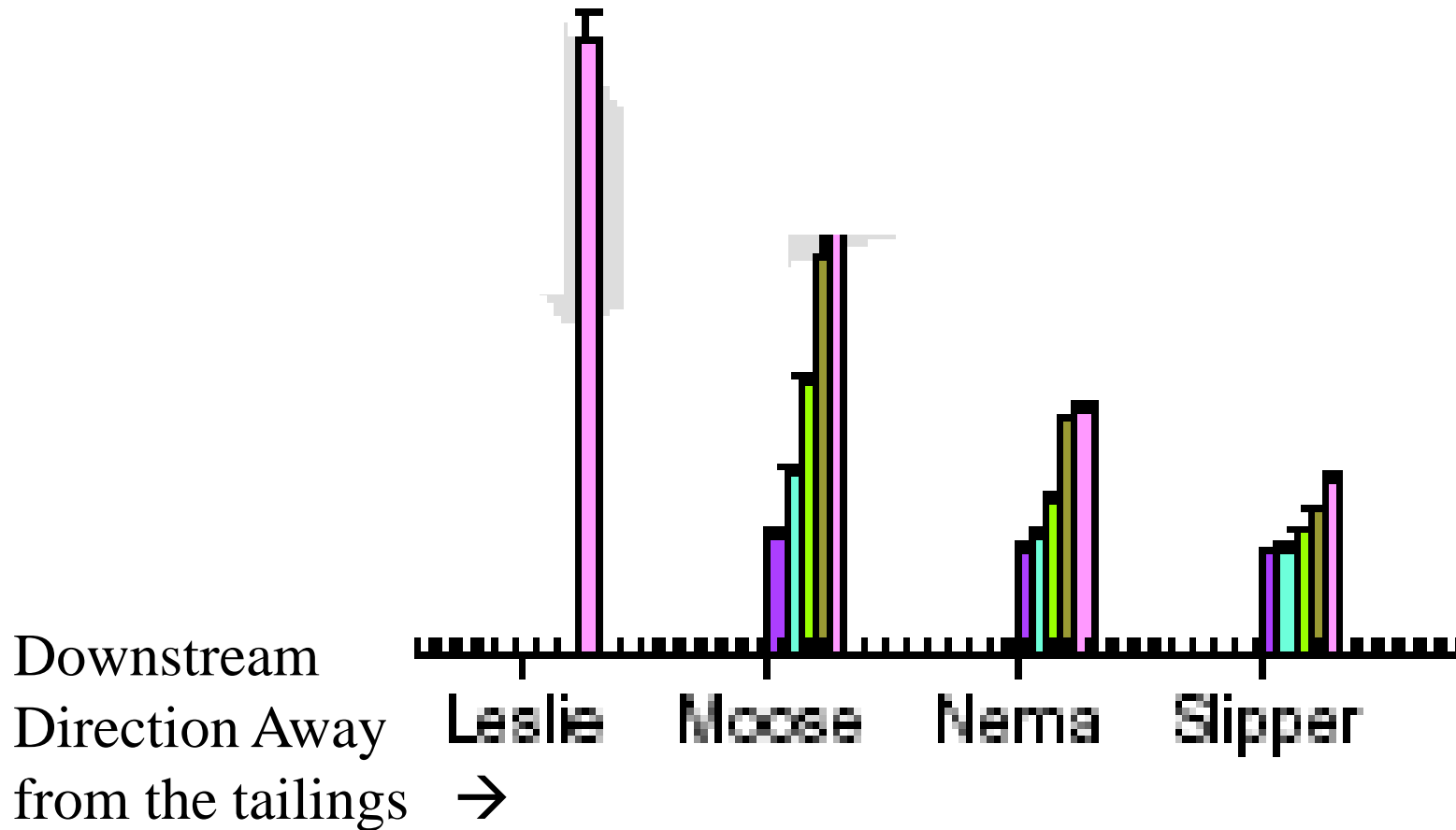
Photo: A magnified  
picture of Daphnia





# Amount of contaminants decreases downstream of Ekati but increases every year

---



# What has been found in past years?

- Small changes have been found in water quality and the fish
- Most of these changes were predicted before the mine was built

# Dene Knowledge and Science

- Both are important for monitoring the environment



- Similarities : Dene Knowledge and Science
  - Both have experts
  - Both have their own languages
  - Both require education
- Better decisions when both are used.



# Caribou

- Yellowknives Dene and Inuit set up Inuksuit locations



# Yellowknives doing wolverine studies





Stay in school, listen to elders, go  
out on the land!!

